



Collaborative
Leadership
Initiative

Reconciliation in Action

The Collaborative Leadership Initiative (CLI) is a facilitated process that provides resources and expertise to support leaders in government, business, and industry, as well as NGOs and the scientific community, as they find pathways for reconciliation and meaningful solutions to shared challenges.

The CLI builds on the successful implementation in the Lake Winnipeg Southern Basin, Manitoba, the first of the CLI sites. Foundational learnings are applied and adapted to meet the needs of each CLI sites, in the Okanagan Watershed, B.C.; Fort Smith, NWT; the Mackenzie River Basin, and most recently the City of Winnipeg in Manitoba. The CLI leverages a proven process to build trust, strengthen relationships, advance ongoing efforts, and develop new initiatives.





Creating the Conditions

CLI starts by working with leaders and decision-makers through a structured process to open the lines of communication, identify shared areas of concern, and prioritize key actions that benefits everyone.

Relationships first

CLI invests time and resources to develop respectful and productive relationships. Through the CLI process, elected leaders work together to dispel myths, build trust and understanding, and open new pathways and methods to tackle the tough issues.

Action-oriented

The CLI process develops new approaches to decision-making, governance, and planning. CLI works with participants to tailor a process to ensure ongoing and long-term collaborative action.

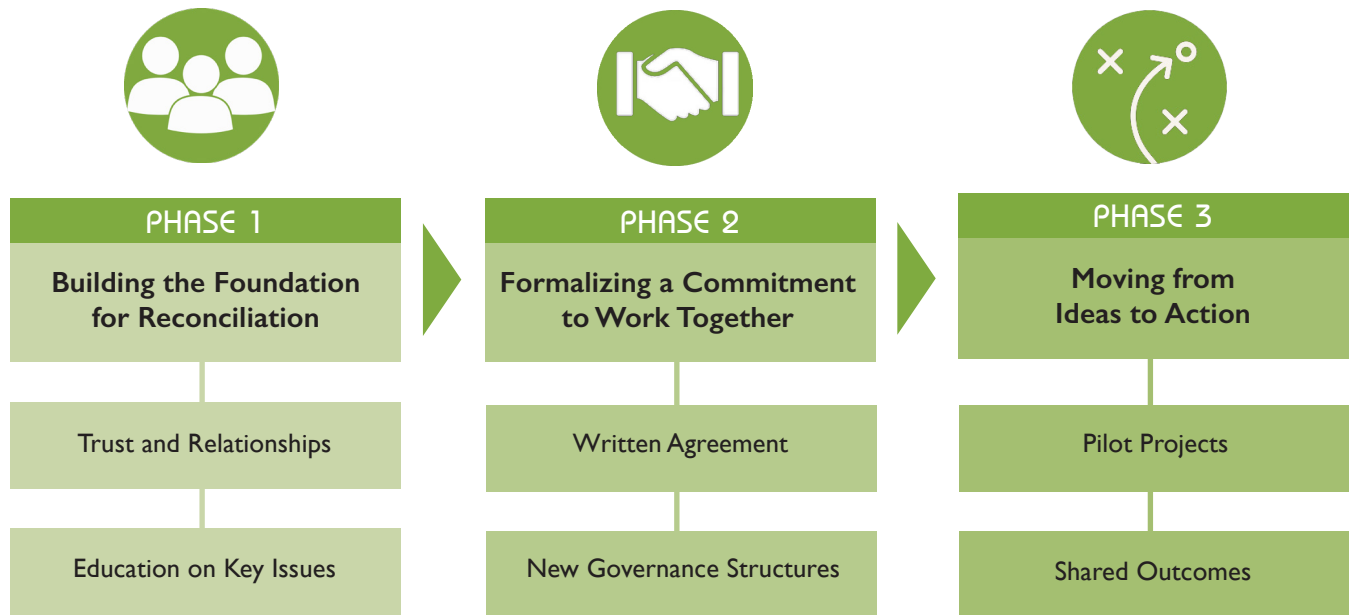
Long-lasting

Sustainability is embedded in the CLI model as it is designed to create permanent change in processes, governance models, and operating systems. Focusing on sustainability from the outset ensures that outcomes are relevant and resilient.

“The structured CLI process provides a framework for leaders and decision makers to successfully step from the shadow of the status quo toward partnerships and solutions that better serve our communities now and in the future.”

-Jim Bear

The CLI Process



A Proven Model

In 2017, CIER introduced the CLI model in Manitoba. The CLI Manitoba process convened elected leaders from 11 Indigenous governments and 16 municipalities for the first time in 154 years. This unprecedented collaboration led to the signing of a historic intergovernmental Memorandum of Understanding (MOU) that has inspired numerous joint initiatives across the Manitoba landscape.



The success of CLI Manitoba has provided a foundation for adapting the model to other regions in Canada. This has led to significant achievements across several sites, including the signing of an MOU in Fort Smith, Northwest Territories, and an MOA in the Okanagan Watershed, British Columbia, where leaders have committed to collaborative governance frameworks. By tailoring the CLI process to the local context of each site, these leaders' tables are addressing shared challenges while advancing reconciliation and sustainable development. Learn more through the CLI Manitoba documentary: [Reconciliation in Action](#) at www.yourcier.org.

Expanding the CLI Legacy

CLI continues to grow, working with regions across Canada to foster reconciliation and collaborative governance. Each initiative is customized to reflect the priorities of participating leaders and communities, leveraging CIER's expertise to guide the process. By fostering trust and empowering leaders, CLI builds a foundation for shared responsibility, innovative solutions, and sustainable futures.

As CLI expands to address emerging challenges, it continues to drive meaningful change, strengthen relationships, and deliver results that benefit both people and the environment.

Our Team

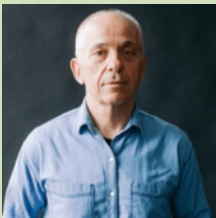
CLI is a project by the Centre for Indigenous Environmental Resources (CIER). CIER is a national Indigenous created and directed charitable organization that embraces diversity and collaboration for capacity building with Indigenous Nations to strengthen and support sustainable communities and a healthy environment. CIER specializes in reconciliation, working in the interface between Indigenous and non-Indigenous communities to advance shared outcomes that benefit everyone. The CLI is guided by a Steering Committee of six CIER associates with rich and diverse experience in advancing reconciliation and good governance.



Merrell-Ann Phare is a lawyer, writer, and the founding Executive Director of CIER, as well as legal counsel and advisor to First Nations and other governments and organisations. As co-facilitator of CLI, she brings extensive experience advancing Indigenous water rights and negotiating inter-governmental water agreements.



Peigi Wilson (pronounced Feggy), is a Métis lawyer, policy analyst, and member of the CIER Board of Directors. Peigi has broad experience across all levels of government, including with the Assembly of First Nations and the Federation of Canadian Municipalities. She is currently a research manager at the First Nations Information Governance Centre.



Michael Miltenberger is an experienced politician and an expert in intergovernmental relations, serving as mayor of the town of Fort Smith, NWT for six years, as well as 20 years as a member of the Northwest Territories Legislature (including 14 years as a minister). Michael co-facilitates the CLI.



Colleen Sklar is the Principal of Creative Resolutions, a conflict resolution expert, policy innovator and strategic communicator. She collaborates with leaders from municipal, provincial, federal and Indigenous governments, the business community, and civil society. A respected leader who shapes organizational structures to meet modern demands.



Jim Bear has extensive practical and political experience at all levels, including serving as Chief of Brokenhead Ojibwe Nation for many years, where he helped establish CLI Manitoba. Jim is also a co-founder of the Southeast Tribal Council and recipient of the Queen's Diamond Jubilee Medal.



Laren Bill is a member of Pelican Lake First Nation and has served as the Chairperson of the Implementation Monitoring Committee for Treaty Land Entitlement in Manitoba for the past seven years. He holds a Master of Natural Resource Management from the University of Manitoba.

For more information on the Collaborative Leadership Initiative, please contact
Emily Hoppe, CLI Project Manager, Co-Governance & Climate Resilience
at ehoppe@yourcier.org

www.yourcier.org