

Impact Assessment & Health Service (IAHS)

First Nations and Inuit Health Branch
Indigenous Services Canada

November 21, 2024



Indigenous Services
Canada

Services aux
Autochtones Canada

Canada

Role of Indigenous Services Canada (ISC)

ISC is a Federal Authority and has a signed MOU with the Impact Assessment Agency of Canada (IAAC) formalizing departmental roles and responsibilities under the *Impact Assessment Act*.

Designated projects

- › ISC is required to provide expert information or knowledge with respect to a designated project at every phase of the impact assessment process and contributes to the assessment of potential impacts, advising on potential mitigation, complementary and accommodation measures as appropriate.
- › ISC is committed to identify policies, plans or programs under department's authority that could address issues or concerns raised by Indigenous groups during impact assessment processes, but that are not fully addressed through mitigation or proposed conditions under the Act.

Regional assessments and strategic assessments

- › Conducted under sections 92, 93 and 95 of the *Impact Assessment Act*.

Designation requests

- › Under section 9 of the *Impact Assessment Act* in relation to projects that are not listed in the Physical Activities Regulations.

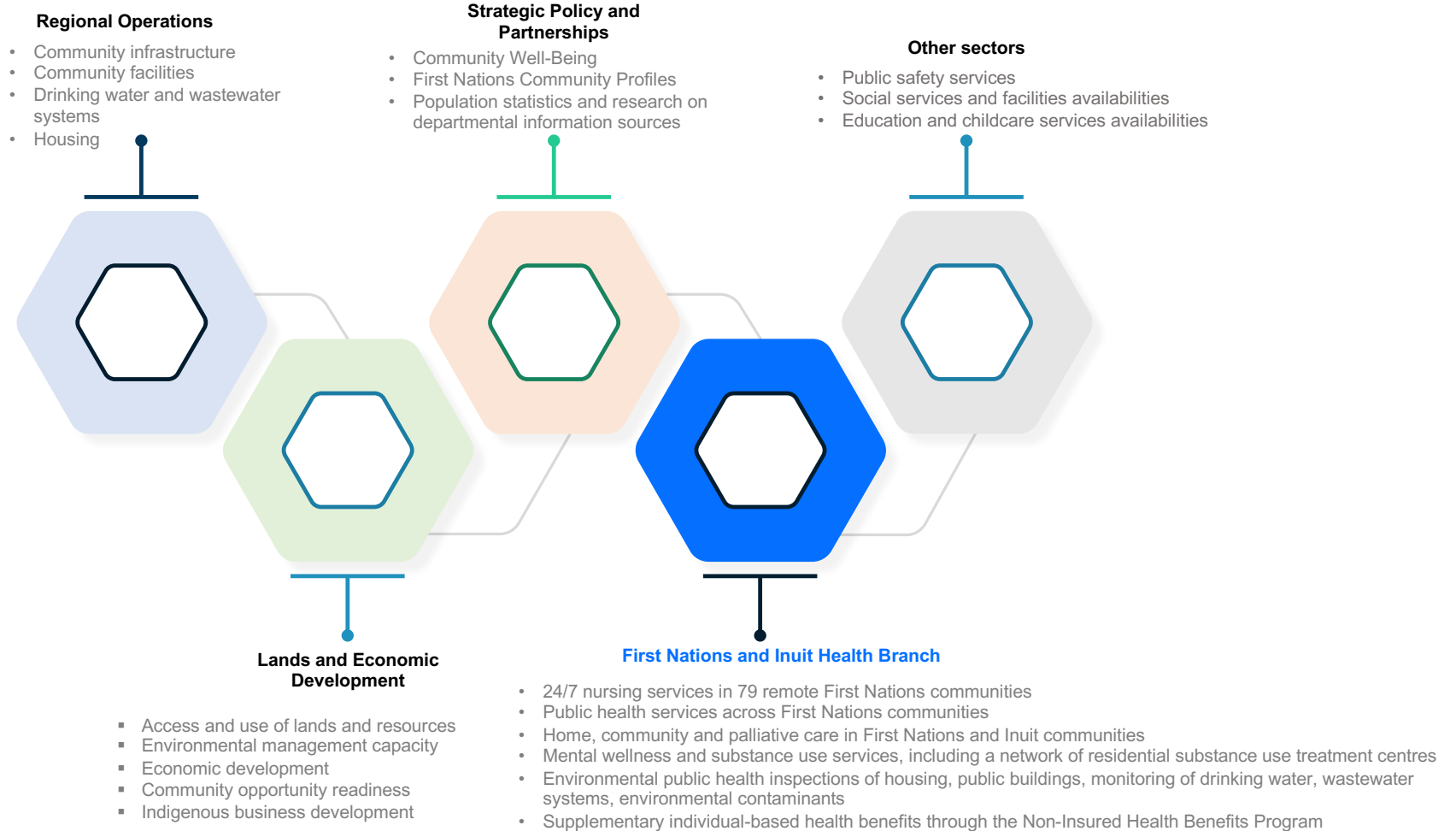
Projects on federal lands

- › Conducted under sections 82 to 91 of the *Impact Assessment Act*, To ensure that smaller, non-designated projects located on federal lands do not result in adverse effects to federal lands.
- › This responsibility is delivered by ISC's Lands and Economic Development Sector's (LED) Environment Directorate, with substantive support from the regional offices.

ISC sectors involved in the impact Assessment

Process

The inclusion of socio-economic and human health perspectives in impact assessments may require input from multiple sectors.



Integrating First Nations Perspectives and Realities into FNIHB Service

Delivery

“...a whole and healthy person expressed through a sense of balance of spirit, emotion, mind and body. Central to wellness is belief in one’s connection to language, land, beings of Creation, and ancestry, supported by a caring family and environment.”

- Elder Jim Dumont Onaubinisay

Jim Dumont is an internationally renowned Ojibway Elder, speaker and traditional knowledge keeper, also known as the Gichi A:ya: the Elder of the Elders in the Eastern Doorway of the Three Fires Midewiwin Lodge.



Role and Key Activities of the Impact Assessment and Health Service (IAHS)

Role of the IAHS:

IAHS was established in 2022/2023 to facilitate, fund, promote and enable First Nations' having the authority, resources, networks, capacity, and interest to develop and undertake community-based health impact assessments specific to local circumstances, traditional knowledge, culture, and their own definitions of health and well-being.

IAHS is integrated within environmental public health infra- and info-structure. It supports and relies on FNIHB regional offices while engaging with First Nations and providing relevant information to IAAC concerning potential impacts of industrial projects on health, social determinants of health and health service delivery in First Nations communities.

Works to to inform, support and facilitate First Nations communities' participation in assessing health impacts of planned major industrial projects in their traditional territories and provide information, assistance and guidance on impact assessment of First Nations health to regional programs and staff.

Supports human health and environmental baseline assessments prior to the start of a major industrial project.

Strengthens existing relationships and expand HIA focused partnerships with First Nations communities and organizations.

Collects, provides, and assesses departmental data and information.

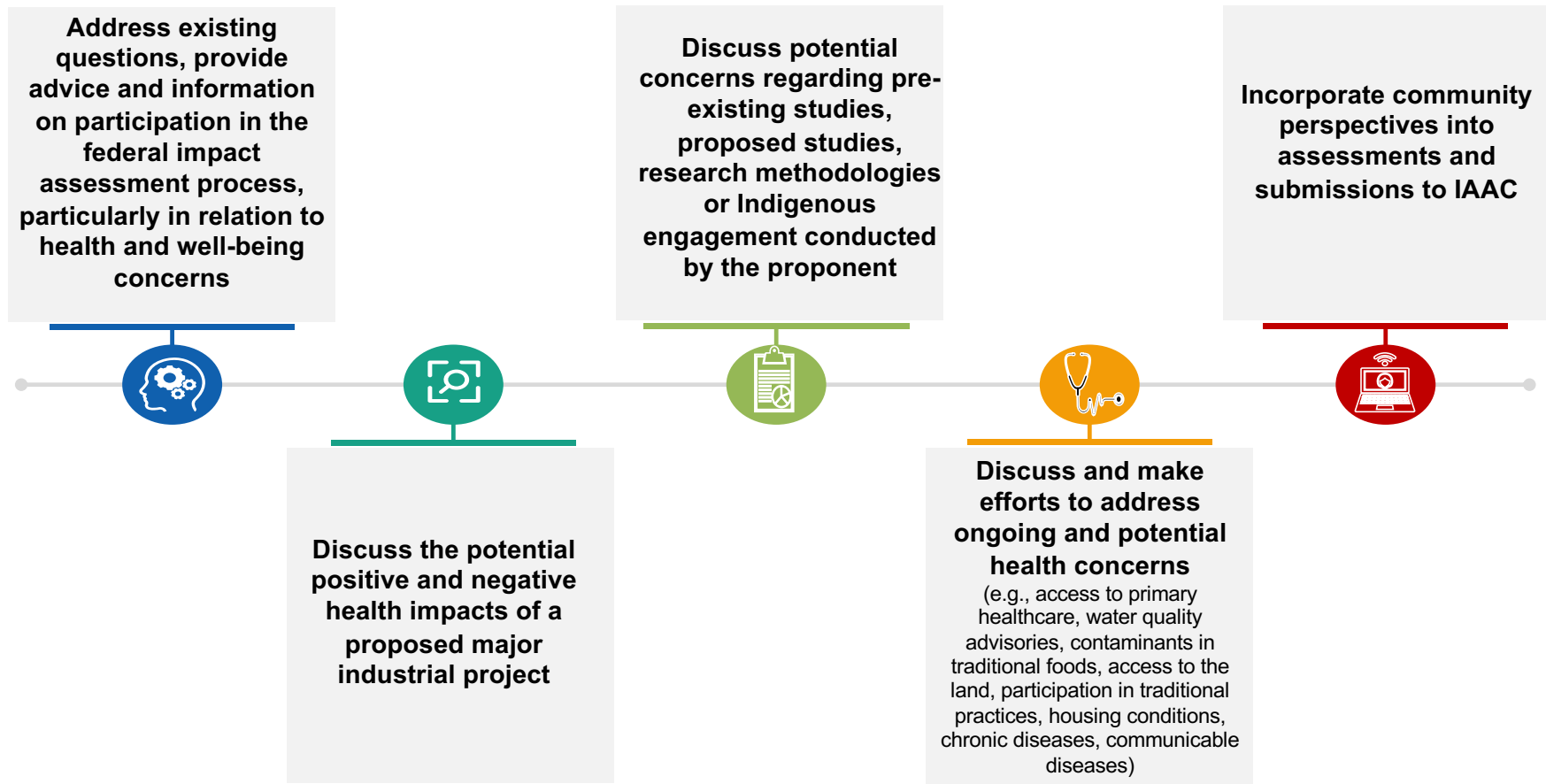
Reviews and comments on documentation related to designated projects with a focus on First Nations' health.


Provides expertise and insight on the health and well-being of First Nations communities.



Direct Regional Services for First Nations

FNIHB's Regional Health Impact Assessment Coordinators are available to meet with First Nations communities (virtually or in-person) to:





First Nations Baseline Assessment Program on Health and the Environment (BAPHE)



First Nations Baseline Assessment Program on Health and the Environment (BAPHE) is a community-based research program that aims to bring together First Nations communities, principal investigators and scientific partners to collect human health and environmental baselines.



BAPHE supports First Nations in assessing the baseline status of human health and the environment in their communities and traditional territories prior to the implementation of a major industrial project (e.g., mine, oil facility, nuclear facility, bridge, road, port, dam).



The program is open to First Nation applicants south of the 60° parallel in Alberta, Saskatchewan, Manitoba, Ontario, Quebec and Atlantic Canada.

- The First Nations Health Authority is responsible for administering a similar program for applicants in British Columbia.

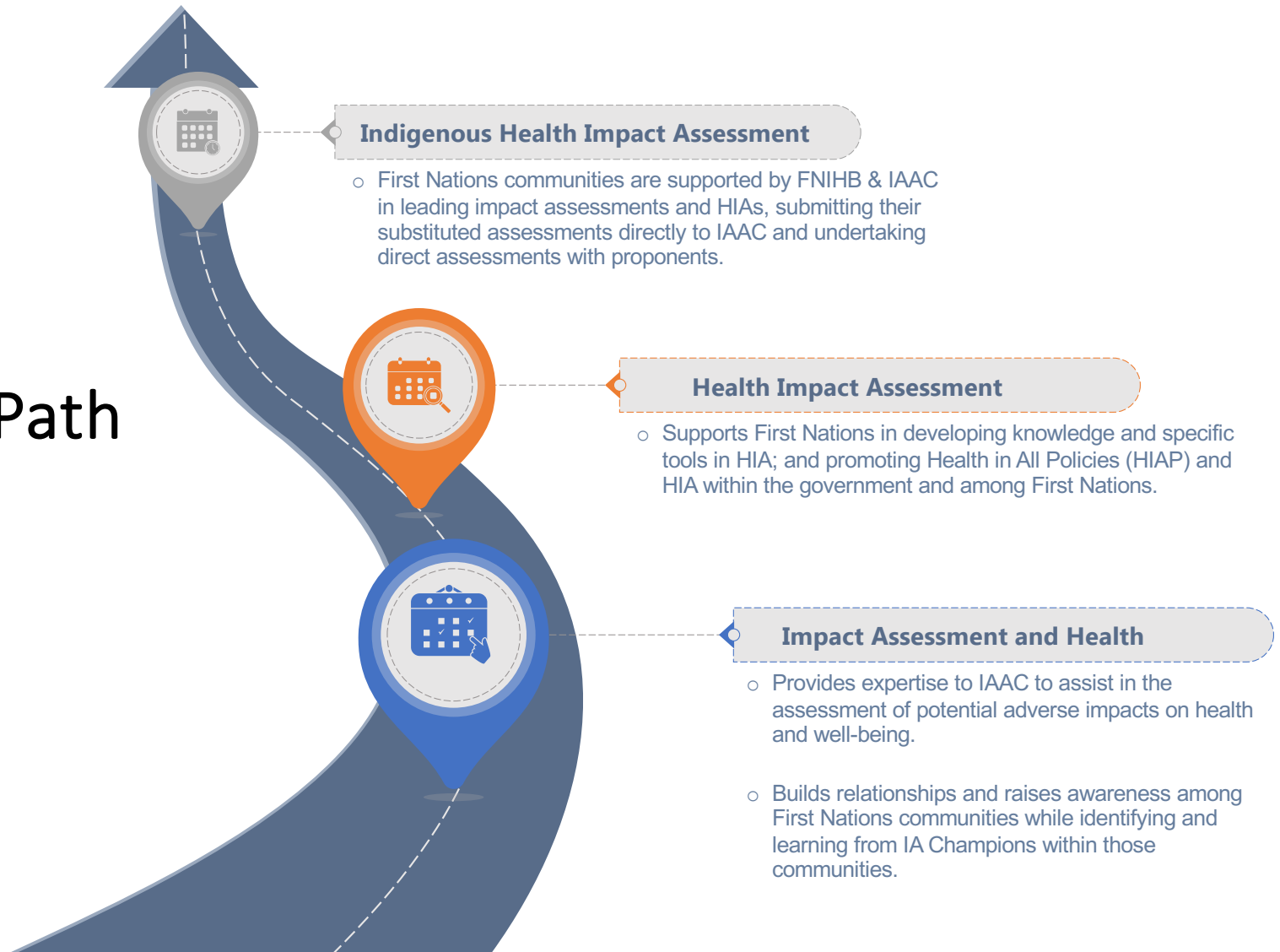


The 2024-2025 Call for Proposals resulted in BAPHE supporting 10 projects in the amount of \$1,200,000 over 2 years; from April 1, 2024, to March 31, 2026.



The 2025-2026 Call for Proposals closed on November 1, 2024, with 29 proposals received.

Service is a Path



Questions & Contact Information

Nicole Cerpnjak

Health Impact Assessment Coordinator – Western Regions (Alberta, Saskatchewan and Manitoba)

nicole.cerpnjak@sac-isc.gc.ca

Meng Koh

Health Impact Assessment Coordinator - Eastern Regions (Ontario, Quebec and Atlantic)

meng.koh@sac-isc.gc.ca