



Terrestrial Species at Risk Overview Prairie Region

Species At Risk Act Consultation, Cooperation,
and Accommodation Workshop

In partnership with the Centre for Indigenous Environmental Resources

Paulson Des Brisay, Species at Risk Biologist

**Canadian Wildlife Service - Environment and
Climate Change Canada (CWS-ECCC)**

Sept 28, 2023



Environment and
Climate Change Canada

Environnement et
Changement climatique Canada

Introduction and Acknowledgement

Ancestors came to the prairies from Iceland, UK in 1800s

Born and raised in Ottawa and Gatineau

Moved back to the Prairies – Manitoba in 2014

Started working for the Canadian Wildlife Service in 2019

Paulson.DesBrisay@ec.gc.ca





Today's goals:

- Provide a high-level overview of some species that undergoing listing or recovery planning in Prairie Region
- Help identify relevant Species at Risk that align with your priorities and the types of activities you might want to include in a funding request
- Work together to increase Indigenous representation in federal recovery planning processes and to conserve and recover Species at Risk

SARA Registry



Government of Canada / Gouvernement du Canada

Search Canada.ca



MENU

Canada.ca > Species at risk public registry

Species search

Keywords *i*

limber pine x

Name or population

Filters

Range

- Alberta (1 / 187)
- British Columbia (1 / 441)
- Manitoba (0 / 189)
- New Brunswick (0 / 130)
- Newfoundland and Labrador (0 / 108)

Sort by:

Common name

Order:

Ascending

limber pine x

Showing one species

Limber Pine

Limber Pine

Legal information

Name
Limber Pine
Date added
Not listed

GIC decision
Pending

COSEWIC information

Name
Limber Pine
Status
Endangered

Range
Alberta, British Columbia

Status on Schedule 1
Not on Schedule 1
Under consideration for addition

Scientific name
Pinus flexilis
Last assessed
2014-11

Taxonomic group
Vascular plants

Grizzly Bear

Western population

Taxonomic group
Mammals (terrestrial)

Legal information

Name
Grizzly Bear
Western population

Status on Schedule 1
Special Concern
Date added
2018-05-30

GIC decision
Add

COSEWIC information

Name
Grizzly Bear
Western population

Scientific name
Ursus arctos
Status
Special Concern

Last assessed
2012-05

Range

Alberta, British Columbia, Manitoba, Northwest Territories, Nunavut, Saskatchewan, Yukon

COSEWIC Assessment and Status Report on the Limber Pine *Pinus flexilis* in Canada

Limber Pine is a five-needled pine, typically 3-15 m tall, with a much-branched, rounded crown. The seed cones are egg-shaped (7-15 cm long by 4-6 cm wide) and light-brown ...

Show more

Attachments: COSEWIC Assessment and Status Report on the Limber Pine *Pinus flexilis* in Canada (2015-12-08) [pdf](#) | [html](#)

Document type: COSEWIC Status Reports

SPECIES THAT ARE A FOCUS FOR PRAIRIE CWS

Species	SARA Status	Reason for Focus
Wood and Plains Bison	Under consideration for Threatened	Cultural significance
Migratory Bats	Proposed EN	Rapid declines
Wolverine	Special Concern	Management Plan in development
Boreal Birds	Special Concern	Management Plans in development
Grassland Birds	Special Concern to Endangered	Multi-species opportunities
Monarch	Proposed Endangered	Identifying Critical Habitat
Bumble Bees	Threatened / Endangered	Guild declines
Black Ash	Proposed EN	Indigenous Harvest
Whitebark / Limber Pine	Endangered / Proposed EN	Draft Recovery Strategies

WOOD BISON

(Threatened)



© Richard Wlasek

Recovery Updates

- Recovery Strategy completed in 2018; identified broad strategies for recovery
- Priority Species under the Pan Canadian Approach to Species at Risk Conservation
- Currently facing imminent threats to recovery (Wabasca and Ronald Lake herds)*

**Please contact CWS for more information on projects related to Wabasca or Ronald Lake herds before submitting proposals*

PLAINS BISON

(Assessed as Threatened)



© Wes Olson

Recovery Updates

- Assessed by COSEWIC as Threatened in 2003 and 2013
- Listing consultations finished in 2022
- Waiting for Minister's listing decision
- Looking ahead to recovery planning if listed

MIGRATORY BATS

(ALL ASSESSED AS ENDANGERED)

HOARY BAT



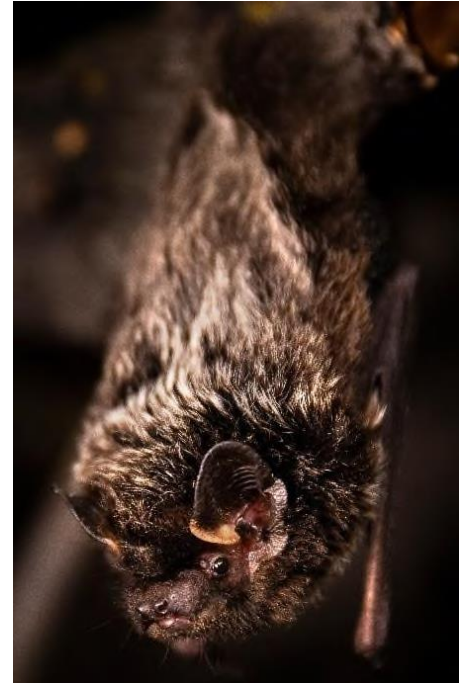
© Jason Headley

EASTERN RED BAT



© Robert Barclay

SILVER-HAIRED BAT



© Jason Headley

WOLVERINE

(SPECIAL CONCERN)

Recovery Updates

- Management plan is underway – engaging on first draft sometime in the new year.
- Open workshops coming up
 - October 12th First Nations in MB
 - October 30th First Nations in AB
- Other specific groups scheduled separately
- Do you want to meet with us? Do you want you to hold your own meeting?

Please contact CWS for more information



© GTWT

Boreal Birds – Management Plans

**All Special Concern*

HARRIS'S SPARROW



OLIVE-SIDED FLYCATCHER



COMMON NIGHTHAWK



LESSER YELLOWLEGS



Grassland Birds

CHESTNUT-COLLARED

LONGSPUR

Endangered



THICK-BILLED LONGSPUR

Threatened



BOBOLINK

TH – Reassessed as SC



SHORT-EARED OWL

SC – Reassessed as TH



Lark Bunting

Threatened



BAIRD'S SPARROW

Special Concern



FERRUGINOUS HAWK

TH – Reassessed as SC



POLLINATORS!



- Capacity request to organize a species-specific meetings to share knowledge.
- Capacity requests to participate in community science – i.e., youth engagement
 - Tri-national Monarch Knowledge Network (<https://birdscanada.org/naturecounts/tmkn/main.jsp>)
 - Bumble Bee Watch – (<https://www.bumblebeewatch.org/>)
- Capacity requests to assess land use/weed management for Recovery Planning

BUMBLE BEES

Species	SARA Status	Recovery Doc
Gypsy Cuckoo Bumblebee	Endangered	Recovery Strategy
Suckley's Cuckoo Bumble Bee	Assessed as Threatened	Recovery Strategy
Western Bumble Bee (<i>occidentalis</i> subspecies)	Assessed as Threatened	Recovery Strategy



Female Gypsy Cuckoo Bumblebee
by Sheila Colla



Female Western Bumble Bee
(*occidentalis*) by Sheila Colla

THREATS

- Pesticides
- Habitat loss
- Climate change
- Parasites and infections from introduced commercial bumble bees
- Decline of other host bumble bee species, especially Western Bumble Bee and **Yellow-banded Bumble Bee (SC)**

Trees!

WHITEBARK PINE (*ENDANGERED*)



Black Ash
(Assessed as Threatened)



LIMBER PINE
(Assessed as *Endangered*)





QUESTIONS?

Natiele Fondren-Gasc

natalie.fondren-gasc@ec.gc.ca

204-889-3882

Rebecca McKay

rebecca.mckay@ec.gc.ca

Species at Risk Recovery Unit

SARA.PNR@ec.gc.ca

A/Head - Paulson Des Brisay

Paulson.DesBrisay@ec.gc.ca

431-335-7598

Funding Information (through ECCC)

Aboriginal Fund for Species at Risk (AFSAR)

Habitat Stewardship Program (HSP)

Critical Habitat Interdepartmental Program (CHIP)

Canada Nature Fund (CNF)

Indigenous Guardians

Priority Places

Community Nominated Priority Places

Challenge / Indigenous Protected and Conserved Areas

Nature-Smart Climate Solutions

Directed Funding

Indigenous Partnerships Initiative