

We would like to hear from you... / Nous voudrions vous entendre...

What words come to mind when you think about
Monarch?

Quels mots vous viennent à l'esprit lorsque vous
pensez au monarque?



INDIGENOUS ENGAGEMENT ON THE DEVELOPMENT OF THE POTENTIAL RECOVERY STRATEGY FOR MONARCH IN CANADA

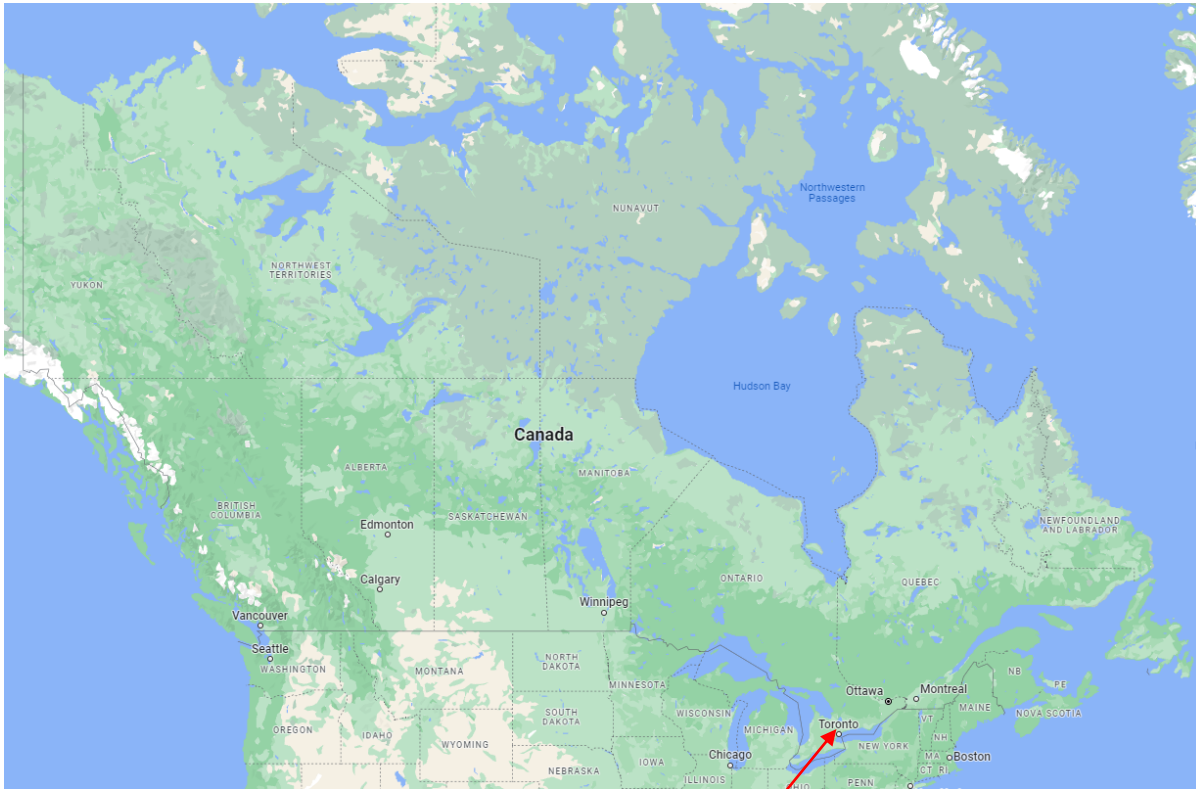
Presented by: Christina Rohe and Elisabeth Shapiro
Canadian Wildlife Service – ON Region
September 21, 2023



Environment and
Climate Change Canada

Environnement et
Changement climatique Canada

Canada



Welcome and Introductions



Mot de bienvenue et présentations



PURPOSE OF THIS SESSION



Photo/image: Bob Graham, Point Pelee National Park

Strengthen our relationships through Listening, Learning and Sharing knowledge about Monarch – a species at risk

This is a National approach to gauge interest for engagement to develop the potential Recovery Strategy for Monarch (*Danaus plexippus*) in Canada

Recovery Strategies can help a species from disappearing from the wild by identifying key habitat needs, threats to its persistence and setting objectives and conservation actions



COSEWIC ASSESSMENT AND LISTING



COSEWIC

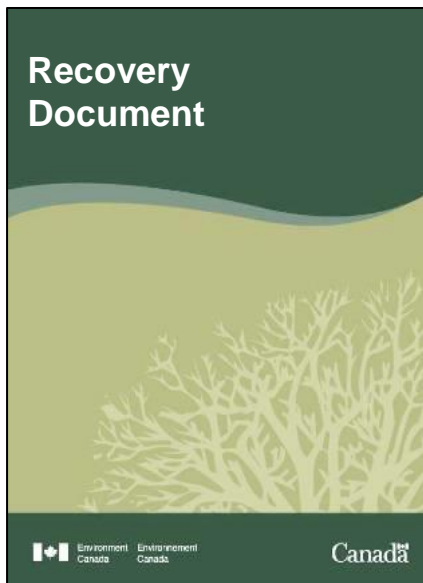
**Monarch was assessed as Endangered by
COSEWIC (2016)**



**Amending Schedule 1 to *the Species at Risk Act* (the
proposed Order)**



DRAFTING A FEDERAL RECOVERY STRATEGY



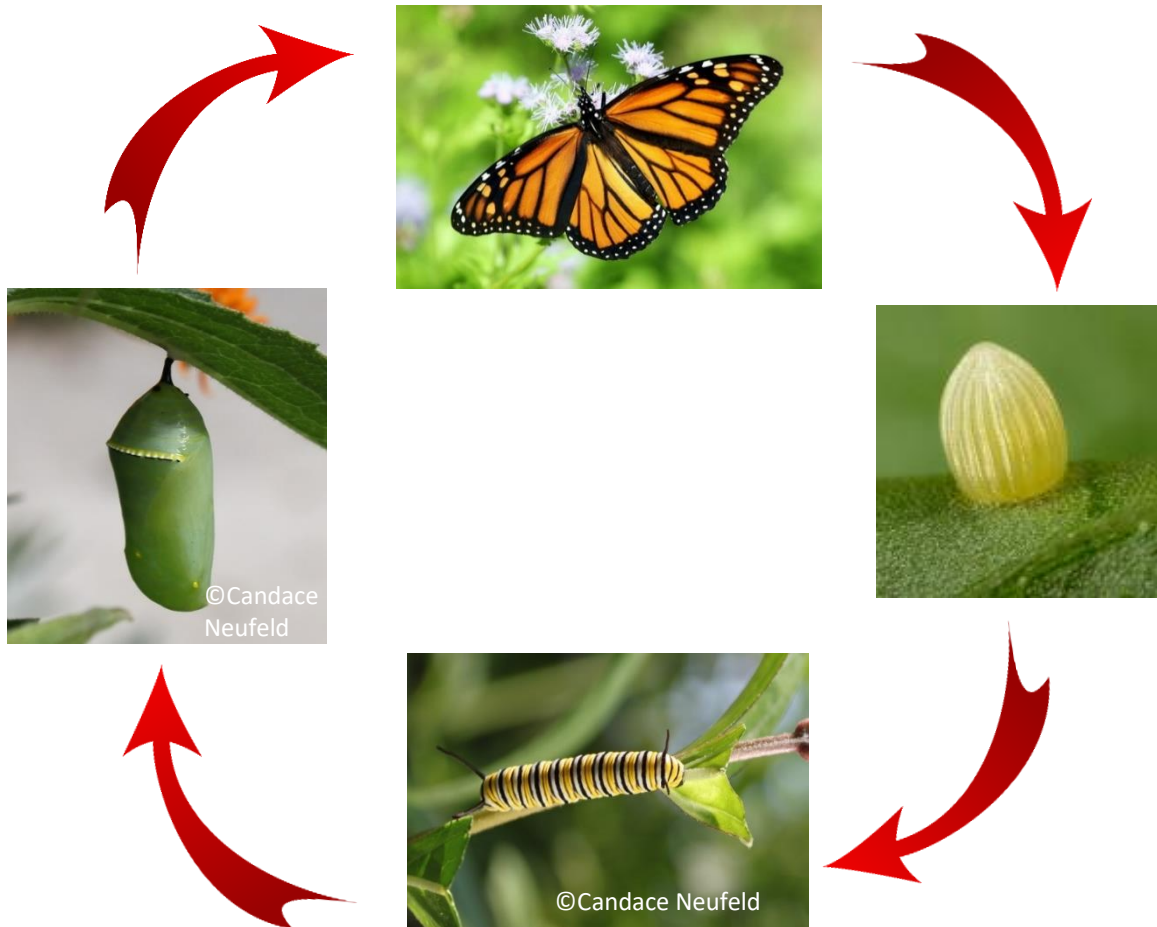
A **federal Recovery Strategy (RS)** is required for species listed as **Endangered**

Sections of a RS:

- Species Description
- Species Population and Distribution
- Species habitat needs/Limiting factors
- Threats to the species survival / recovery
- Population and Distribution objective(s)
- Broad strategies and conservation measures
- Measuring progress
- Critical Habitat (CH) and Activities Likely to Destroy CH
- Effects the recommended actions outlined in the RS may have on the environment and other species



Monarch (*Danaus plexippus*): Life Cycle



Monarch Habitat



Monarch Habitat – Milkweed

Showy
Milkweed



Swamp
Milkweed

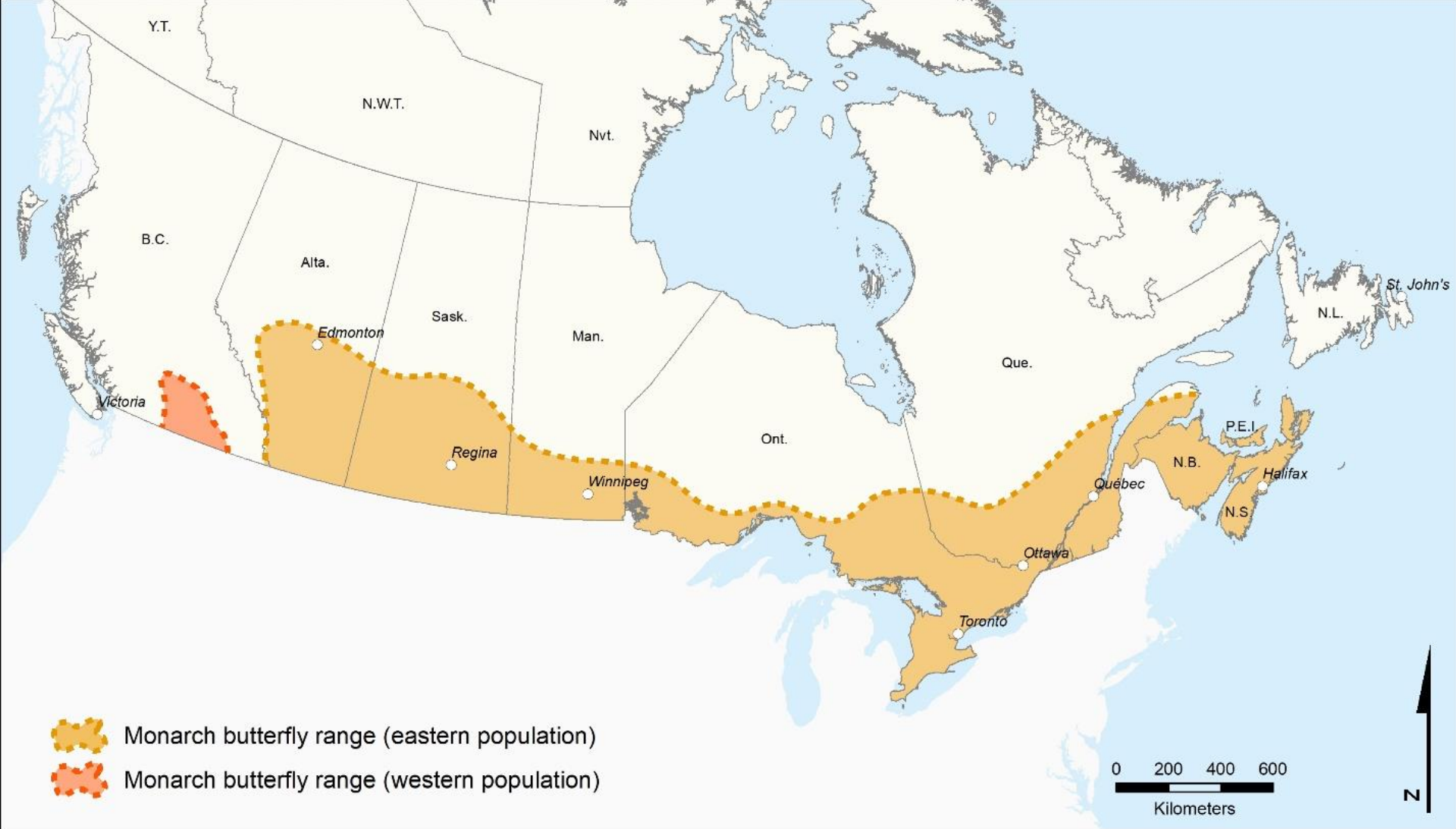


Butterfly
Milkweed



Common
Milkweed



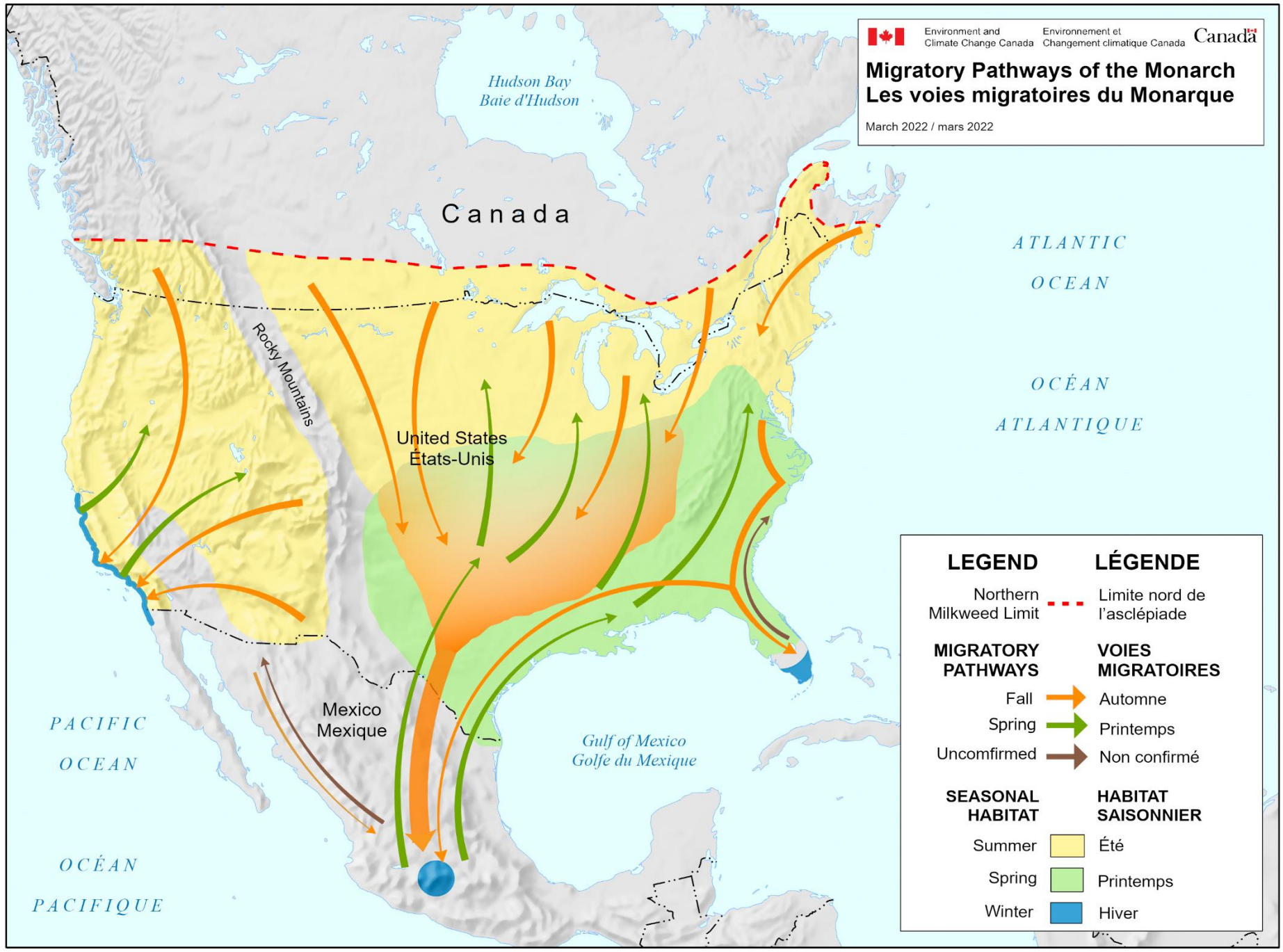


Canadian Wildlife Federation 2023. Map generated using data from iNaturalist, Mission Monarch, Monarch Watch and eButterfly.

Migratory Pathways of the Monarch

Les voies migratoires du Monarque

March 2022 / mars 2022

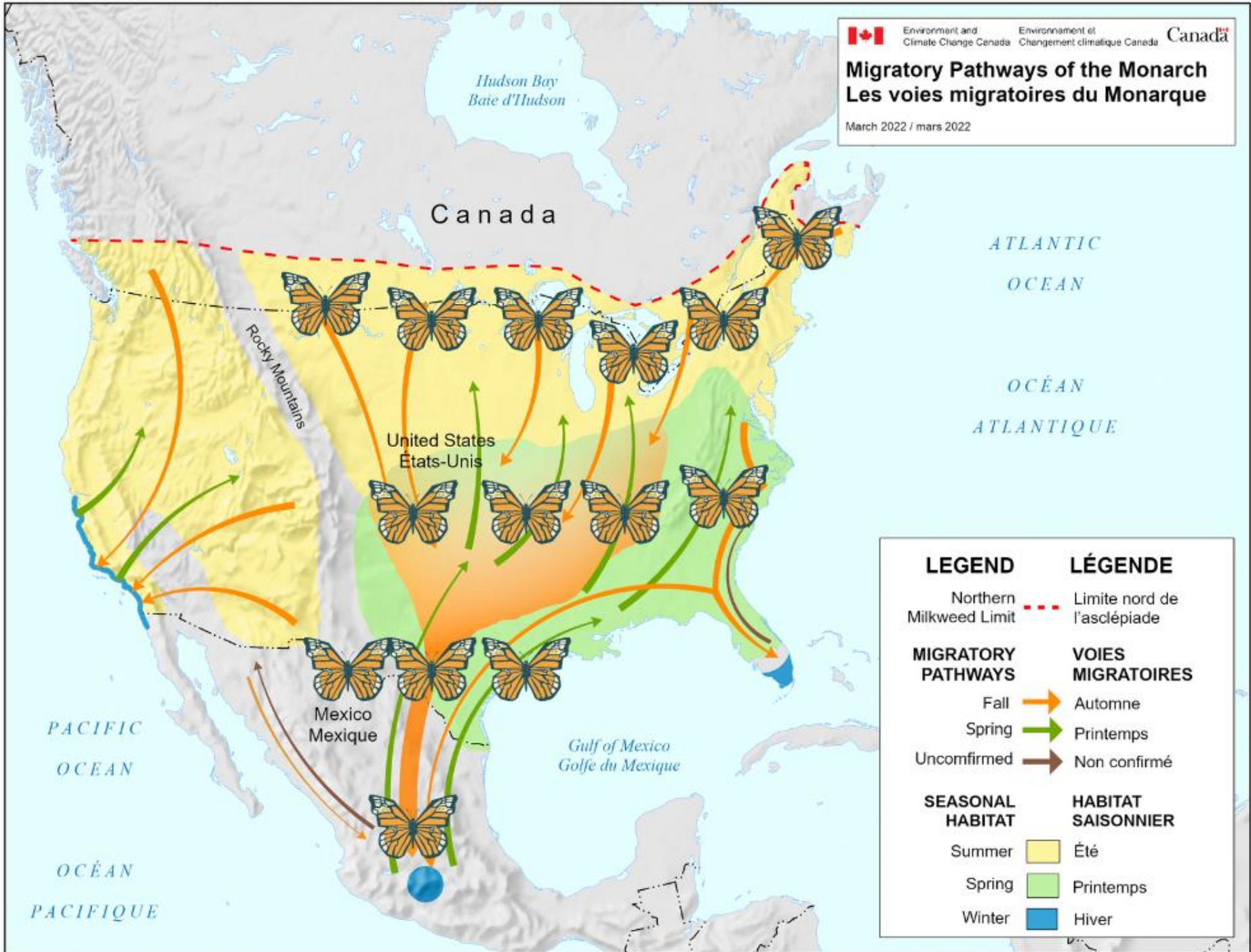


LEGEND	LÉGENDE
Northern Milkweed Limit	--- Limite nord de l'asclépiade
MIGRATORY PATHWAYS	VOIES MIGRATOIRES
Fall	→ Automne
Spring	→ Printemps
Unconfirmed	→ Non confirmé
SEASONAL HABITAT	HABITAT SAISONNIER
Summer	■ Été
Spring	■ Printemps
Winter	■ Hiver

Migratory Pathways of the Monarch

Les voies migratoires du Monarque

March 2022 / mars 2022



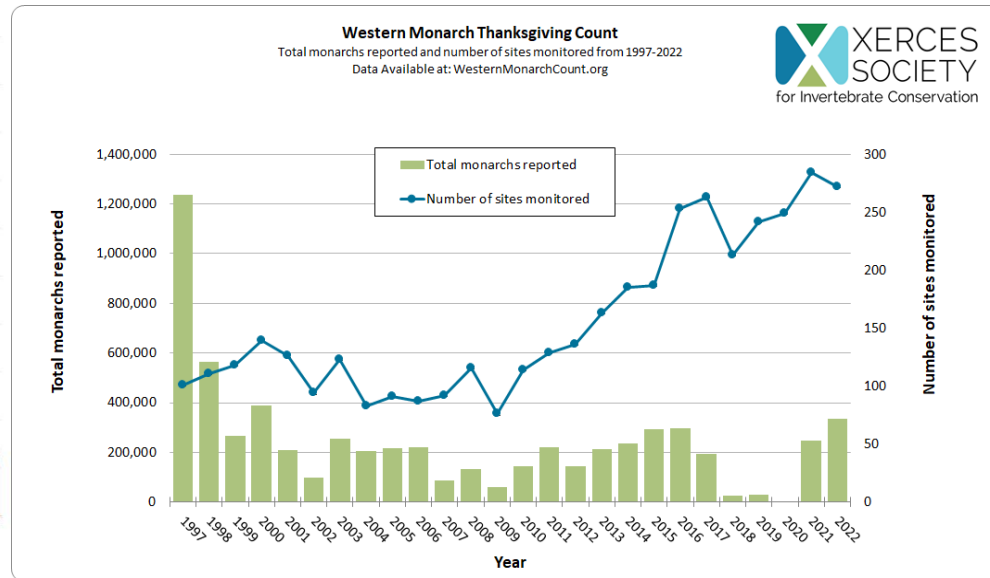
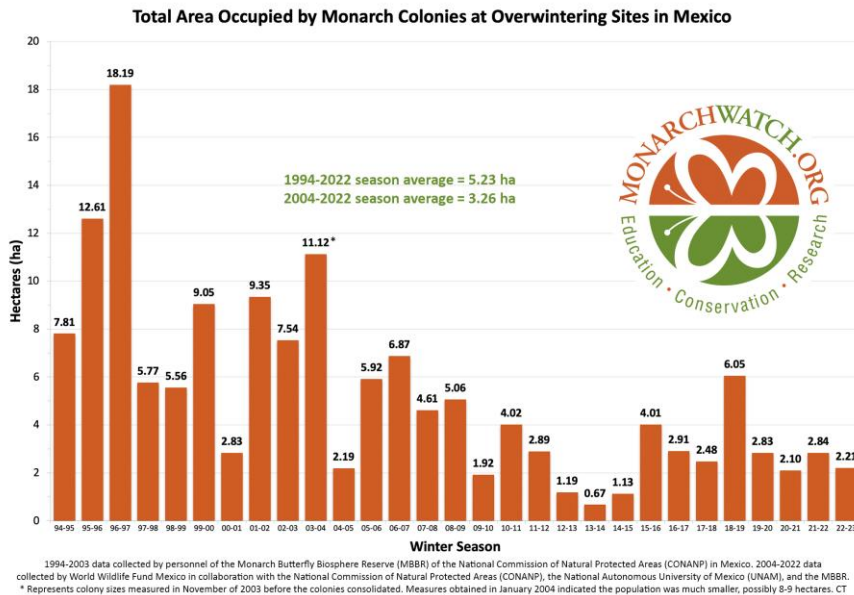
LEGEND	LÉGENDE
Northern Milkweed Limit	--- Limite nord de l'asclépiade
MIGRATORY PATHWAYS	VOIES MIGRATOIRES
Fall	→ Automne
Spring	→ Printemps
Unconfirmed	→ Non confirmé
SEASONAL HABITAT	HABITAT SAISONNIER
Summer	■ Été
Spring	■ Printemps
Winter	■ Hiver

Monarch Habitat – Migration



Monarch Population Status

Declines of >50% have occurred from 2006 to 2016



[Rendon-Salinas et al. 2023](#)

[Xerces Society 2023](#)



Environment and
Climate Change Canada

Environnement et
Changement climatique Canada



Threats to Monarch

Agricultural Intensification

Loss of breeding and nectaring habitat



Habitat Loss

Reduction of nectar sources and milkweed across range; loss of staging habitat to support migration



Pesticides

Overuse of herbicides and pesticides (e.g., herbicide resistant crop, neonicotinoids)



Climate Change

Affects migration: microclimate, weather events, and phenological mismatch



Addressing threats in Canada will benefit many pollinators, insects, and other species at risk



Conservation Actions

Citizen Science



Habitat Creation & Restoration



Plant Native Flowers



Multi-species conservation & management



Education & Outreach



Best Management Practices



INDIGENOUS ENGAGEMENT

IF you are interested, there are many opportunities to contribute to the development of the potential recovery strategy for Monarch and/or to be involved with Monarch conservation:

Examples for how to contribute information and stewardship actions:

- Information can be provided today during this session, following the session (questionnaire) and/or following community outreach to gather information to contribute (via email/mail/verbally discuss input);
- Comment on an early draft version of the potential recovery strategy (e.g., during jurisdictional review, during 60-day public comment period)
- Contribute to stewardship activities (upcoming slides on community based programs)

Examples for how information can be acknowledged

- As an individual
- On behalf of your First Nation / Indigenous Organization
- Anonymous and under the umbrella of 'information shared during the September 2023 Monarch session.

The screenshot shows the Species at Risk Public Registry website for Monarch (Danaus plexippus). The page includes the following sections:

- Government of Canada / Gouvernement du Canada** logo and search bar.
- MENU** dropdown.
- Canada.ca > Species at risk public registry > Species search** breadcrumb.
- Monarch (Danaus plexippus) =** title.
- Species summary** section with details:
 - COSEWIC scientific name: *Danaus plexippus*
 - Taxonomic group: Arthropods
 - Range: Alberta, British Columbia, Manitoba, New Brunswick, Nova Scotia, Ontario, Prince Edward Island, Quebec, Saskatchewan
- Legal list** section:
 - Legal common name: Monarch
 - Date added: June 5, 2003
 - Status on Schedule 1: Special Concern
 - SARA status history: This species was initially listed under the scientific name of Danaus plexippus. In January 2005, it was changed to Danaus plexippus. However, no changes have been made to eit...
- Table of contents** sidebar:
 - Species summary**
 - Legal list
 - COSEWIC assessment
 - Species details**
 - Description
 - Distribution and population
 - Habitat
 - Biology
 - Threats
 - Protection
 - Recovery initiatives**
 - Status of recovery planning
 - Documents**
 - Action Plans: 8
 - COSEWIC Annual Reports: 2
- Show more** link.

***Please Note** all proposed and final recovery documents are posted on the Species at Risk (SAR) Public Registry <https://www.canada.ca/en/environment-climate-change/services/species-risk-public-registry.html>



Recovery Planning: Polling Questions / Planification du rétablissement: Questions de type sondage

Have you/your community been involved in: / Est-ce que vous ou votre communauté avez été impliqués dans de telles activités:

1. Participating in surveys for Monarch? / Participation à des inventaires pour le monarque?
2. Creating or improving Monarch habitat? / Création ou amélioration d'habitat pour le monarque?



Community Science

Tracking a widespread, migratory species

mission monarch

Journey North



iNaturalist

eButterfly



Environment and
Climate Change Canada

Environnement et
Changement climatique Canada

Canada

Mission Monarch Expert: A National Monitoring Program



From 29 July to 7 August 2022, more than **2,600 volunteers** in Canada, Mexico and the United States contributed nearly **6,000 observations**, breaking the #MonarchBlitz participation record yet again!

Learn more at
MONARCHBLITZ.ORG



espace
pour la
vie montréal
insectarium

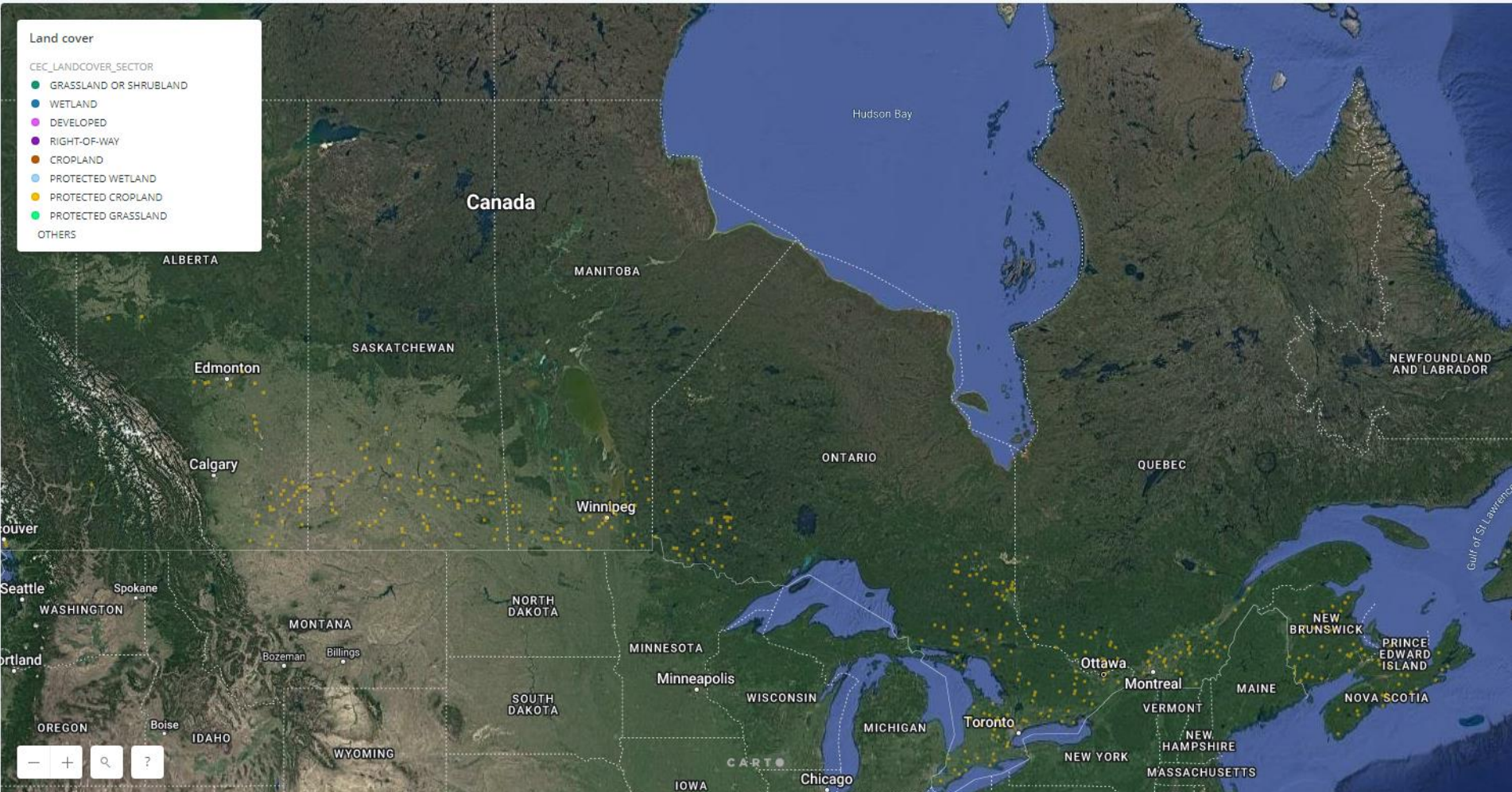


mission
monarch



MISSION MONARCH - EXPERT

Mission Monarch Expert



Canadian National Native Seed Strategy



- Creating Monarch and pollinator habitat requires local native seeds.
- Right now, it is difficult and expensive to obtain local native seeds, in every region of Canada.
- To restore large areas of habitat, we will need to resolve the critical shortage of native seeds through co-operation.
- The National Native Seed Strategy aims to bring together many partners to increase the availability of local native seed for restoration.





Would you and/or your community be interested in more information of how to provide input towards the development of a potential Recovery Strategy and/or participating in stewardship activities?

If so, please leave your name, email address and region in the chat room (e.g., Marcy Monarch, Marcy.Monarch@butterflyconservation.ca, Ontario region)

Est-ce que vous ou votre communauté seriez intéressés à obtenir plus de renseignements sur la façon de contribuer à l'élaboration d'un éventuel programme de rétablissement ou de participer à des activités d'intendance?

Si oui, veuillez laisser votre nom, votre adresse courriel et votre région dans la salle de clavardage (p. ex., Marcy Monarch, Marcy.Monarch@butterflyconservation.ca, région de l'Ontario).



We would like to hear from you... / Nous voudrions vous entendre...

Suggestions for how you would be ideally involved or consulted on the development of a potential future recovery strategy for Monarch?

Idéalement, comment voudriez-vous être impliqués ou consultés relativement à l'élaboration d'un éventuel programme de rétablissement pour le monarque?



CENTRE FOR INDIGENOUS ENVIRONMENTAL RESOURCES (CIER) – CANADIAN WILDLIFE SERVICE (CWS), SPECIES AT RISK ACT (SARA) CONSULTATION, COOPERATION AND ACCOMMODATION PROJECT (CCA)



SARACCA project helps facilitate Indigenous communities' and organizations' participation in Environment and Climate Change Canada's (ECCC) listing and recovery planning processes for terrestrial species. Website:

<https://yourcier.org/sara/>



Environment and
Climate Change Canada

Environnement et
Changement climatique Canada

Canada

CWS SARA-Consultation, Cooperation and Accommodation Leads

CWS Regions with Monarch	Contact Information	Contact – <i>putting a face to the name</i>
Pacific	Mady L.M. MacDonald Phone: 250-726-3843 E-mail: Mady.Macdonald@ec.gc.ca	
Prairie	Rebecca McKay E-mail: Rebecca.McKay@ec.gc.ca	
Ontario	Chris Rohe Phone: 437-747-0551 E-mail: Christina.Rohe@ec.gc.ca	
Québec	Marie-Hélène Dickey Phone: 581-703-2885 E-mail: Marie-Helene.Dickey@ec.gc.ca	
Atlantic	Caroline Canning E-mail: Caroline.Canning@ec.gc.ca	

For More Information...

Species at Risk Public Registry: <https://www.canada.ca/en/environment-climate-change/services/species-risk-public-registry.html>

Community Science: www.Mission-monarch.org
www.monarchwatch.org
www.jorneynorth.org

COSEWIC: <https://www.cosewic.ca/index.php/en-ca/>

