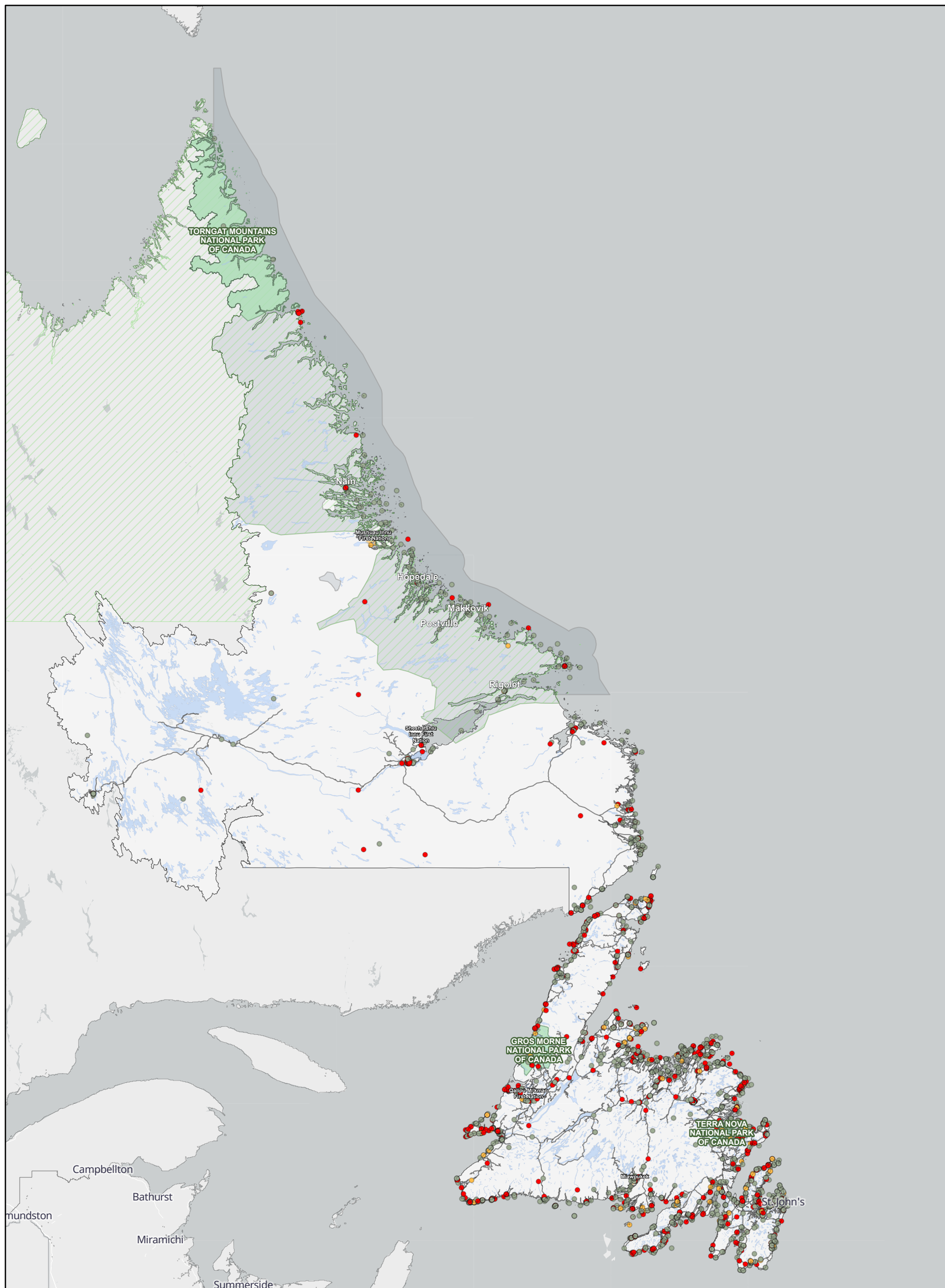


# Federal Contaminated Sites in Newfoundland and Labrador

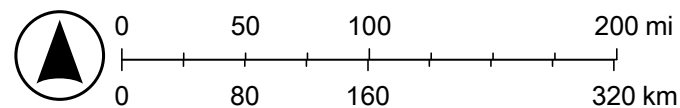


1/14/2023

Federal Contaminated Sites Inventory (Treasury Board Secretariat, December 2022)

- Active
- Suspected
- Closed
- Road Network (Statistics Canada, April 2022)
- National Parks of Canada (Natural Resources Canada, July 2022)
- Aboriginal Lands of Canada [Indian Reserves, Land Claim Settlement Lands and Indian Lands] (Natural Resources Canada, 2017)
- Nunavik & Nunatsiavut
- Labrador Inuit Land Claims Agreement (2005)
- Newfoundland and Labrador

1:8,489,298



Map data © OpenStreetMap contributors, Microsoft, Facebook, Inc. and its affiliates, Esri Community Maps contributors, Map layer by Esri



## Map disclaimer:

Please note that the maps are distributed for informational and representational purposes only. Therefore, the maps have no legal effect and should not be used to define official boundaries. His Majesty the King in Right of Canada, as represented by the Minister of the Environment does not warrant or guarantee the accuracy or completeness of the information contained in the maps. The maps are not to be relied upon for any purpose or activity, including but not limited to assessing consultation obligations. His Majesty the King in Right of Canada (ECCC) does not assume any legal liability or responsibility for any damage or loss incurred as a result of the use of the maps.

The geospatial information regarding Indigenous Peoples, Indigenous Lands, Treaties, agreements, and claims displayed on these maps was selected using the [Aboriginal and Treaty Rights Information System \(ATRIS\)](#), a Web-based information system intended to map out the location of Indigenous communities hosted by CIRNAC or on the [Open Data catalog](#) of the Government of Canada. We cannot guarantee that the information is up to date as the datasets have been published by departments outside of the FCSAP Secretariat. Please note that some information such as potential Aboriginal or treaty rights may not have been included because the necessary Indigenous and First Nations cartographic resources were not publicly available on the Government of Canada open databases at the time the maps were produced. If you have any questions about the map production, you can contact the Secretariat's email address ([fcsap.pascf@ec.gc.ca](mailto:fcsap.pascf@ec.gc.ca)).

For more geospatial information on federal contaminated sites, please consult the Treasury Board of Canada Secretariat's map browser: [Directory of Federal Real Property | Treasury Board of Canada Secretariat \(tbs-sct.gc.ca\)](#)

# NEWFOUNDLAND AND LABRADOR

## FEDERAL CONTAMINATED SITES SUMMARY TABLES

Site Status and Class	Count
<b>Active Sites</b>	<b>568</b>
Class 1 (High Priority)	38
Class 2 (Medium Priority)	193
Class 3 (Low Priority)	196
Not a Priority for Action	24
Insufficient Information	6
Not Classified	111
<b>Closed Sites</b>	<b>1740</b>
Class 1 (High Priority)	79
Class 2 (Medium Priority)	202
Class 3 (Low Priority)	218
Not a Priority for Action	477
Insufficient Information	53
Not Classified	711
<b>Suspected Sites</b>	<b>121</b>
Class 1 (High Priority)	-
Class 2 (Medium Priority)	-
Class 3 (Low Priority)	1
Not a Priority for Action	-
Insufficient Information	-
Not Classified	120
<b>Grand Total</b>	<b>2429</b>

For more information - <https://www.tbs-sct.gc.ca/fcsi-rscf/home-accueil-eng.aspx>

### Custodians Include:

- Agriculture and Agri-Food Canada
- Canadian Food Inspection Agency
- Environment and Climate Change Canada
- Fisheries and Oceans Canada
- Indigenous Services Canada
- National Defence
- National Research Council Canada
- Parks Canada Agency
- Public Services and Procurement Canada
- Royal Canadian Mounted Police
- Transport Canada