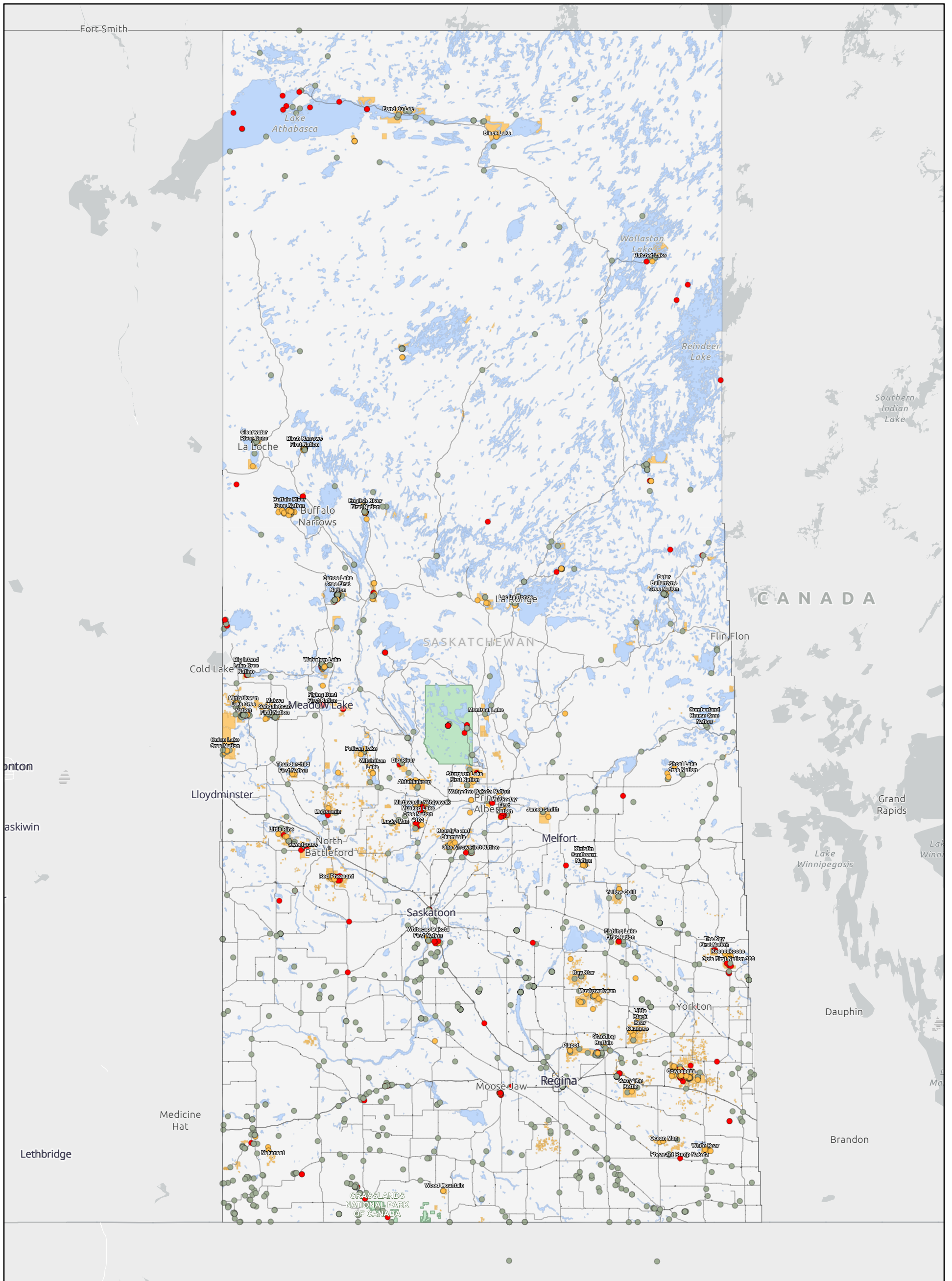


# Federal Contaminated Sites in Saskatchewan



12/30/2022

Federal Contaminated Sites Inventory (Treasury Board Secretariat, December 2022)

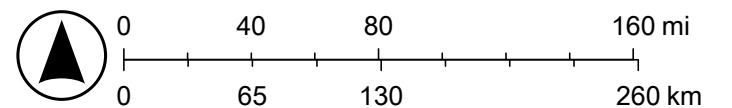
- Active
- Suspected
- Closed

— Road Network (Statistics Canada, April 2022)

■ National Parks of Canada (Natural Resources Canada, July 2022)

■ Aboriginal Lands of Canada [Indian Reserves, Land Claim Settlement Lands and Indian Lands] (Natural Resources Canada, 2017)

1:6,600,000



Map data © OpenStreetMap contributors, Microsoft, Facebook, Inc. and its affiliates, Esri Community Maps contributors, Map layer by Esri  
Sources: Esri, HERE, Garmin, FAO, NOAA, USGS, ©



## Map disclaimer:

Please note that the maps are distributed for informational and representational purposes only. Therefore, the maps have no legal effect and should not be used to define official boundaries. His Majesty the King in Right of Canada, as represented by the Minister of the Environment does not warrant or guarantee the accuracy or completeness of the information contained in the maps. The maps are not to be relied upon for any purpose or activity, including but not limited to assessing consultation obligations. His Majesty the King in Right of Canada (ECCC) does not assume any legal liability or responsibility for any damage or loss incurred as a result of the use of the maps.

The geospatial information regarding Indigenous Peoples, Indigenous Lands, Treaties, agreements, and claims displayed on these maps was selected using the [Aboriginal and Treaty Rights Information System \(ATRIS\)](#), a Web-based information system intended to map out the location of Indigenous communities hosted by CIRNAC or on the [Open Data catalog](#) of the Government of Canada. We cannot guarantee that the information is up to date as the datasets have been published by departments outside of the FCSAP Secretariat. Please note that some information such as potential Aboriginal or treaty rights may not have been included because the necessary Indigenous and First Nations cartographic resources were not publicly available on the Government of Canada open databases at the time the maps were produced. If you have any questions about the map production, you can contact the Secretariat's email address ([fcsap.pascf@ec.gc.ca](mailto:fcsap.pascf@ec.gc.ca)).

For more geospatial information on federal contaminated sites, please consult the Treasury Board of Canada Secretariat's map browser: [Directory of Federal Real Property | Treasury Board of Canada Secretariat \(tbs-sct.gc.ca\)](#)

# SASKATCHEWAN

## FEDERAL CONTAMINATED SITES SUMMARY TABLES

Site Status and Class		Count
<b>Active Sites</b>		<b>186</b>
	Class 1 (High Priority)	13
	Class 2 (Medium Priority)	48
	Class 3 (Low Priority)	58
	Not a Priority for Action	14
	Insufficient Information	11
	Not Classified	42
<b>Closed Sites</b>		<b>1187</b>
	Class 1 (High Priority)	108
	Class 2 (Medium Priority)	78
	Class 3 (Low Priority)	102
	Not a Priority for Action	128
	Insufficient Information	18
	Not Classified	753
<b>Suspected Sites</b>		<b>276</b>
	Class 1 (High Priority)	-
	Class 2 (Medium Priority)	-
	Class 3 (Low Priority)	-
	Not a Priority for Action	-
	Insufficient Information	-
	Not Classified	276
<b>Grand Total</b>		<b>1649</b>

## Indigenous Services Canada (ISC)

Site Status and Class		Count
<b>Active Sites</b>		<b>103</b>
	Class 1 (High Priority)	4
	Class 2 (Medium Priority)	33
	Class 3 (Low Priority)	31
	Not a Priority for Action	4
	Insufficient Information	2
	Not Classified	29
<b>Closed Sites</b>		<b>460</b>
	Class 1 (High Priority)	3
	Class 2 (Medium Priority)	21
	Class 3 (Low Priority)	22
	Not a Priority for Action	41
	Insufficient Information	8
	Not Classified	365
<b>Suspected Sites</b>		<b>264</b>
	Class 1 (High Priority)	-
	Class 2 (Medium Priority)	-
	Class 3 (Low Priority)	-
	Not a Priority for Action	-
	Insufficient Information	-
	Not Classified	264
<b>Grand Total</b>		<b>827</b>

## Department of National Defence (DND)

Site Status and Class		Count
<b>Active Sites</b>		<b>23</b>
	Class 1 (High Priority)	1
	Class 2 (Medium Priority)	12
	Class 3 (Low Priority)	3
	Not a Priority for Action	5
	Insufficient Information	2
	Not Classified	-
<b>Closed Sites</b>		<b>16</b>
	Class 1 (High Priority)	-
	Class 2 (Medium Priority)	2
	Class 3 (Low Priority)	3
	Not a Priority for Action	7
	Insufficient Information	2
	Not Classified	2
<b>Suspected Sites</b>		<b>4</b>
	Class 1 (High Priority)	-
	Class 2 (Medium Priority)	-
	Class 3 (Low Priority)	-
	Not a Priority for Action	-
	Insufficient Information	-
	Not Classified	4
<b>Grand Total</b>		<b>43</b>

## Fisheries and Oceans Canada (DFO)

Site Status and Class		Count
<b>Active Sites</b>		<b>14</b>
	Class 1 (High Priority)	-
	Class 2 (Medium Priority)	-
	Class 3 (Low Priority)	12
	Not a Priority for Action	1
	Insufficient Information	1
	Not Classified	-
<b>Closed Sites</b>		<b>27</b>
	Class 1 (High Priority)	2
	Class 2 (Medium Priority)	4
	Class 3 (Low Priority)	6
	Not a Priority for Action	4
	Insufficient Information	-
	Not Classified	11
<b>Suspected Sites</b>		<b>1</b>
	Class 1 (High Priority)	-
	Class 2 (Medium Priority)	-
	Class 3 (Low Priority)	-
	Not a Priority for Action	-
	Insufficient Information	-
	Not Classified	1
<b>Grand Total</b>		<b>42</b>

## Agriculture and Agri-Food Canada (AAFC)

Site Status and Class		Count
<b>Active Sites</b>		<b>17</b>
	Class 1 (High Priority)	-
	Class 2 (Medium Priority)	1
	Class 3 (Low Priority)	8
	Not a Priority for Action	2
	Insufficient Information	-
	Not Classified	-
<b>Closed Sites</b>		<b>271</b>
	Class 1 (High Priority)	1
	Class 2 (Medium Priority)	32
	Class 3 (Low Priority)	58
	Not a Priority for Action	57
	Insufficient Information	-
	Not Classified	123
<b>Suspected Sites</b>		<b>2</b>
	Class 1 (High Priority)	-
	Class 2 (Medium Priority)	-
	Class 3 (Low Priority)	-
	Not a Priority for Action	-
	Insufficient Information	-
	Not Classified	2
<b>Grand Total</b>		<b>290</b>

## Royal Canadian Mounted Police (RCMP)

Site Status and Class		Count
<b>Active Sites</b>		<b>12</b>
	Class 1 (High Priority)	1
	Class 2 (Medium Priority)	1
	Class 3 (Low Priority)	2
	Not a Priority for Action	1
	Insufficient Information	-
	Not Classified	7
<b>Closed Sites</b>		<b>95</b>
	Class 1 (High Priority)	1
	Class 2 (Medium Priority)	1
	Class 3 (Low Priority)	3
	Not a Priority for Action	1
	Insufficient Information	1
	Not Classified	88
<b>Suspected Sites</b>		<b>3</b>
	Class 1 (High Priority)	-
	Class 2 (Medium Priority)	-
	Class 3 (Low Priority)	-
	Not a Priority for Action	-
	Insufficient Information	-
	Not Classified	3
<b>Grand Total</b>		<b>110</b>

## Parks Canada Agency (PCA)

Site Status and Class		Count
<b>Active Sites</b>		<b>7</b>
	Class 1 (High Priority)	2
	Class 2 (Medium Priority)	1
	Class 3 (Low Priority)	-
	Not a Priority for Action	-
	Insufficient Information	-
	Not Classified	4
<b>Closed Sites</b>		<b>13</b>
	Class 1 (High Priority)	-
	Class 2 (Medium Priority)	-
	Class 3 (Low Priority)	3
	Not a Priority for Action	10
	Insufficient Information	-
	Not Classified	-
<b>Suspected Sites</b>		<b>0</b>
	Class 1 (High Priority)	-
	Class 2 (Medium Priority)	-
	Class 3 (Low Priority)	-
	Not a Priority for Action	-
	Insufficient Information	-
	Not Classified	-
<b>Grand Total</b>		<b>20</b>

## Environment and Climate Change Canada (ECCC)

Site Status and Class		Count
<b>Active Sites</b>		<b>6</b>
	Class 1 (High Priority)	5
	Class 2 (Medium Priority)	-
	Class 3 (Low Priority)	-
	Not a Priority for Action	-
	Insufficient Information	-
	Not Classified	1
<b>Closed Sites</b>		<b>272</b>
	Class 1 (High Priority)	99
	Class 2 (Medium Priority)	9
	Class 3 (Low Priority)	2
	Not a Priority for Action	3
	Insufficient Information	-
	Not Classified	159
<b>Suspected Sites</b>		<b>2</b>
	Class 1 (High Priority)	-
	Class 2 (Medium Priority)	-
	Class 3 (Low Priority)	-
	Not a Priority for Action	-
	Insufficient Information	-
	Not Classified	2
<b>Grand Total</b>		<b>280</b>

## Transport Canada (TC)

Site Status and Class		Count
<b>Active Sites</b>		<b>4</b>
	Class 1 (High Priority)	-
	Class 2 (Medium Priority)	-
	Class 3 (Low Priority)	2
	Not a Priority for Action	1
	Insufficient Information	-
	Not Classified	1
<b>Closed Sites</b>		<b>17</b>
	Class 1 (High Priority)	-
	Class 2 (Medium Priority)	3
	Class 3 (Low Priority)	3
	Not a Priority for Action	2
	Insufficient Information	6
	Not Classified	3
<b>Suspected Sites</b>		<b>0</b>
	Class 1 (High Priority)	-
	Class 2 (Medium Priority)	-
	Class 3 (Low Priority)	-
	Not a Priority for Action	-
	Insufficient Information	-
	Not Classified	-
<b>Grand Total</b>		<b>21</b>

## Canadian Border Services Agency (CBSA)

Site Status and Class		Count
<b>Active Sites</b>		<b>0</b>
	Class 1 (High Priority)	-
	Class 2 (Medium Priority)	-
	Class 3 (Low Priority)	-
	Not a Priority for Action	-
	Insufficient Information	-
	Not Classified	-
<b>Closed Sites</b>		<b>10</b>
	Class 1 (High Priority)	2
	Class 2 (Medium Priority)	6
	Class 3 (Low Priority)	1
	Not a Priority for Action	-
	Insufficient Information	-
	Not Classified	1
<b>Suspected Sites</b>		<b>0</b>
	Class 1 (High Priority)	-
	Class 2 (Medium Priority)	-
	Class 3 (Low Priority)	-
	Not a Priority for Action	-
	Insufficient Information	-
	Not Classified	-
<b>Grand Total</b>		<b>10</b>

## Health Canada (HC)

Site Status and Class		Count
<b>Active Sites</b>		<b>0</b>
	Class 1 (High Priority)	-
	Class 2 (Medium Priority)	-
	Class 3 (Low Priority)	-
	Not a Priority for Action	-
	Insufficient Information	-
	Not Classified	-
<b>Closed Sites</b>		<b>4</b>
	Class 1 (High Priority)	-
	Class 2 (Medium Priority)	-
	Class 3 (Low Priority)	-
	Not a Priority for Action	3
	Insufficient Information	1
	Not Classified	-
<b>Suspected Sites</b>		<b>0</b>
	Class 1 (High Priority)	-
	Class 2 (Medium Priority)	-
	Class 3 (Low Priority)	-
	Not a Priority for Action	-
	Insufficient Information	-
	Not Classified	-
<b>Grand Total</b>		<b>4</b>

## National Research Council of Canada (NRC)

Site Status and Class		Count
<b>Active Sites</b>		<b>0</b>
	Class 1 (High Priority)	-
	Class 2 (Medium Priority)	-
	Class 3 (Low Priority)	-
	Not a Priority for Action	-
	Insufficient Information	-
	Not Classified	-
<b>Closed Sites</b>		<b>1</b>
	Class 1 (High Priority)	-
	Class 2 (Medium Priority)	-
	Class 3 (Low Priority)	1
	Not a Priority for Action	-
	Insufficient Information	-
	Not Classified	-
<b>Suspected Sites</b>		<b>0</b>
	Class 1 (High Priority)	-
	Class 2 (Medium Priority)	-
	Class 3 (Low Priority)	-
	Not a Priority for Action	-
	Insufficient Information	-
	Not Classified	-
<b>Grand Total</b>		<b>1</b>

## VIA Rail Canada (VIA)

Site Status and Class		Count
<b>Active Sites</b>		<b>0</b>
	Class 1 (High Priority)	-
	Class 2 (Medium Priority)	-
	Class 3 (Low Priority)	-
	Not a Priority for Action	-
	Insufficient Information	-
	Not Classified	-
<b>Closed Sites</b>		<b>1</b>
	Class 1 (High Priority)	-
	Class 2 (Medium Priority)	-
	Class 3 (Low Priority)	-
	Not a Priority for Action	-
	Insufficient Information	-
	Not Classified	1
<b>Suspected Sites</b>		<b>0</b>
	Class 1 (High Priority)	-
	Class 2 (Medium Priority)	-
	Class 3 (Low Priority)	-
	Not a Priority for Action	-
	Insufficient Information	-
	Not Classified	-
<b>Grand Total</b>		<b>1</b>