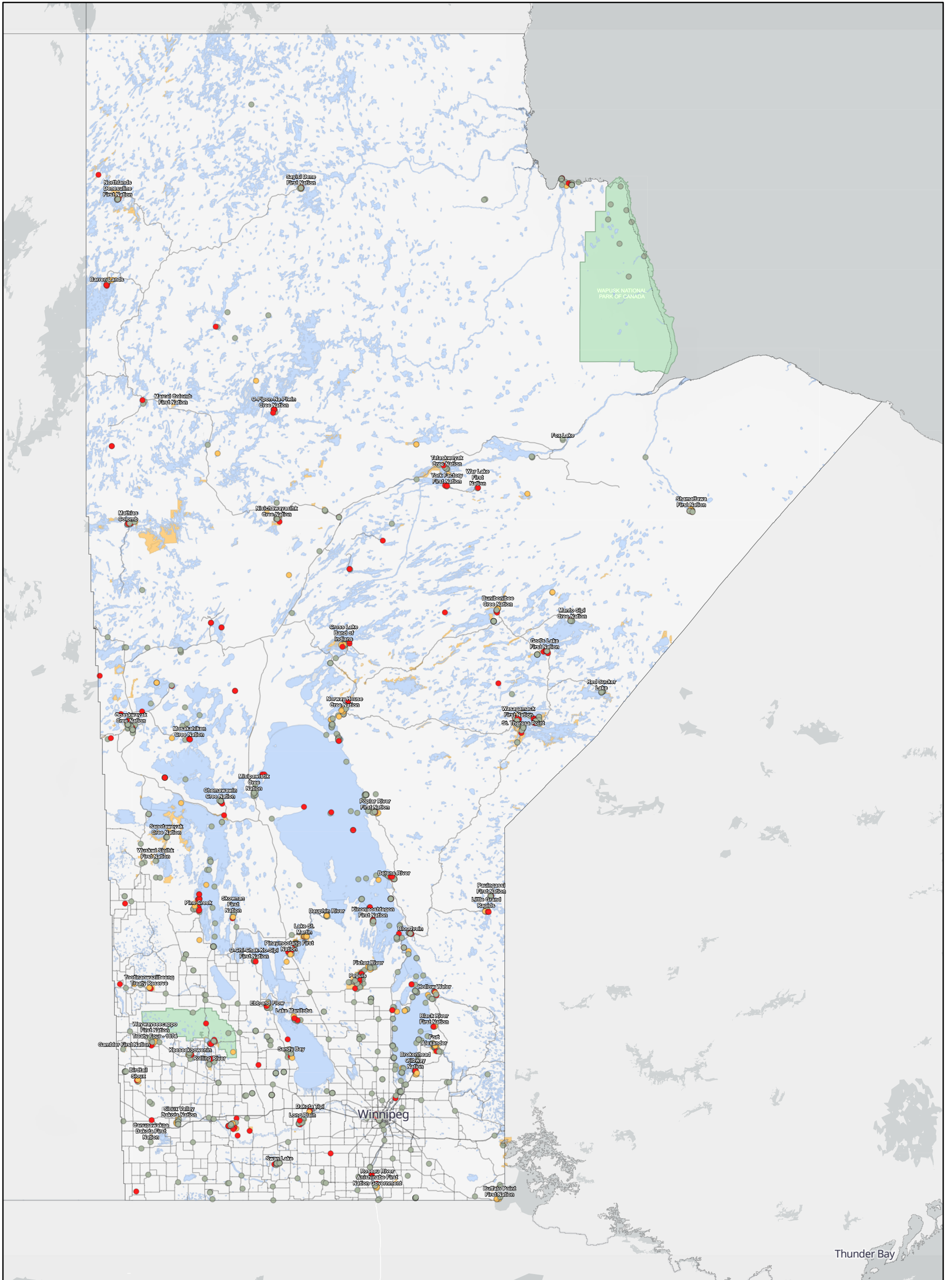


Federal Contaminated Sites in Manitoba



1/9/2023

Federal Contaminated Sites Inventory (Treasury Board Secretariat, December 2022)

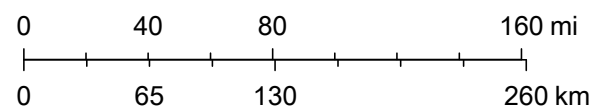
- Active
- Suspected
- Closed

— Road Network (Statistics Canada, April 2022)

Aboriginal Lands of Canada [Indian Reserves, Land Claim Settlement Lands and Indian Lands] (Natural Resources Canada, 2017)

National Parks of Canada (Natural Resources Canada, July 2022)

1:6,744,649



Map data © OpenStreetMap contributors, Microsoft, Facebook, Inc. and its affiliates, Esri Community Maps contributors, Map layer by Esri



Map disclaimer:

Please note that the maps are distributed for informational and representational purposes only. Therefore, the maps have no legal effect and should not be used to define official boundaries. His Majesty the King in Right of Canada, as represented by the Minister of the Environment does not warrant or guarantee the accuracy or completeness of the information contained in the maps. The maps are not to be relied upon for any purpose or activity, including but not limited to assessing consultation obligations. His Majesty the King in Right of Canada (ECCC) does not assume any legal liability or responsibility for any damage or loss incurred as a result of the use of the maps.

The geospatial information regarding Indigenous Peoples, Indigenous Lands, Treaties, agreements, and claims displayed on these maps was selected using the [Aboriginal and Treaty Rights Information System \(ATRIS\)](#), a Web-based information system intended to map out the location of Indigenous communities hosted by CIRNAC or on the [Open Data catalog](#) of the Government of Canada. We cannot guarantee that the information is up to date as the datasets have been published by departments outside of the FCSAP Secretariat. Please note that some information such as potential Aboriginal or treaty rights may not have been included because the necessary Indigenous and First Nations cartographic resources were not publicly available on the Government of Canada open databases at the time the maps were produced. If you have any questions about the map production, you can contact the Secretariat's email address (fcsap.pascf@ec.gc.ca).

For more geospatial information on federal contaminated sites, please consult the Treasury Board of Canada Secretariat's map browser: [Directory of Federal Real Property | Treasury Board of Canada Secretariat \(tbs-sct.gc.ca\)](#)

MANITOBA

FEDERAL CONTAMINATED SITES SUMMARY TABLES

Site Status and Class		Count
Active Sites		261
	Class 1 (High Priority)	29
	Class 2 (Medium Priority)	106
	Class 3 (Low Priority)	43
	Not a Priority for Action	29
	Insufficient Information	14
	Not Classified	40
Closed Sites		918
	Class 1 (High Priority)	54
	Class 2 (Medium Priority)	87
	Class 3 (Low Priority)	60
	Not a Priority for Action	89
	Insufficient Information	13
	Not Classified	615
Suspected Sites		157
	Class 1 (High Priority)	-
	Class 2 (Medium Priority)	-
	Class 3 (Low Priority)	-
	Not a Priority for Action	-
	Insufficient Information	-
	Not Classified	157
Grand Total		1336

Indigenous Services Canada (ISC)

Site Status and Class		Count
Active Sites		182
	Class 1 (High Priority)	26
	Class 2 (Medium Priority)	71
	Class 3 (Low Priority)	31
	Not a Priority for Action	14
	Insufficient Information	12
	Not Classified	28
Closed Sites		442
	Class 1 (High Priority)	40
	Class 2 (Medium Priority)	51
	Class 3 (Low Priority)	23
	Not a Priority for Action	14
	Insufficient Information	9
	Not Classified	305
Suspected Sites		131
	Class 1 (High Priority)	-
	Class 2 (Medium Priority)	-
	Class 3 (Low Priority)	-
	Not a Priority for Action	-
	Insufficient Information	-
	Not Classified	131
Grand Total		755

Fisheries and Oceans Canada (DFO)

Site Status and Class		Count
Active Sites		32
	Class 1 (High Priority)	-
	Class 2 (Medium Priority)	13
	Class 3 (Low Priority)	6
	Not a Priority for Action	10
	Insufficient Information	1
	Not Classified	2
Closed Sites		221
	Class 1 (High Priority)	1
	Class 2 (Medium Priority)	4
	Class 3 (Low Priority)	19
	Not a Priority for Action	36
	Insufficient Information	-
	Not Classified	161
Suspected Sites		17
	Class 1 (High Priority)	-
	Class 2 (Medium Priority)	-
	Class 3 (Low Priority)	-
	Not a Priority for Action	-
	Insufficient Information	-
	Not Classified	17
Grand Total		270

Department of National Defence (DND)

Site Status and Class		Count
Active Sites		19
	Class 1 (High Priority)	1
	Class 2 (Medium Priority)	8
	Class 3 (Low Priority)	3
	Not a Priority for Action	2
	Insufficient Information	-
	Not Classified	5
Closed Sites		20
	Class 1 (High Priority)	-
	Class 2 (Medium Priority)	2
	Class 3 (Low Priority)	3
	Not a Priority for Action	8
	Insufficient Information	-
	Not Classified	7
Suspected Sites		6
	Class 1 (High Priority)	-
	Class 2 (Medium Priority)	-
	Class 3 (Low Priority)	-
	Not a Priority for Action	-
	Insufficient Information	-
	Not Classified	6
Grand Total		45

Royal Canadian Mounted Police (RCMP)

Site Status and Class		Count
Active Sites		9
	Class 1 (High Priority)	-
	Class 2 (Medium Priority)	5
	Class 3 (Low Priority)	-
	Not a Priority for Action	1
	Insufficient Information	-
	Not Classified	3
Closed Sites		75
	Class 1 (High Priority)	1
	Class 2 (Medium Priority)	-
	Class 3 (Low Priority)	-
	Not a Priority for Action	1
	Insufficient Information	-
	Not Classified	73
Suspected Sites		3
	Class 1 (High Priority)	-
	Class 2 (Medium Priority)	-
	Class 3 (Low Priority)	-
	Not a Priority for Action	-
	Insufficient Information	-
	Not Classified	3
Grand Total		87

Parks Canada Agency (PCA)

Site Status and Class		Count
Active Sites		8
	Class 1 (High Priority)	1
	Class 2 (Medium Priority)	5
	Class 3 (Low Priority)	1
	Not a Priority for Action	-
	Insufficient Information	-
	Not Classified	1
Closed Sites		14
	Class 1 (High Priority)	-
	Class 2 (Medium Priority)	4
	Class 3 (Low Priority)	4
	Not a Priority for Action	5
	Insufficient Information	-
	Not Classified	1
Suspected Sites		0
	Class 1 (High Priority)	-
	Class 2 (Medium Priority)	-
	Class 3 (Low Priority)	-
	Not a Priority for Action	-
	Insufficient Information	-
	Not Classified	-
Grand Total		22

Transport Canada (TC)

Site Status and Class		Count
Active Sites		5
	Class 1 (High Priority)	-
	Class 2 (Medium Priority)	3
	Class 3 (Low Priority)	-
	Not a Priority for Action	-
	Insufficient Information	1
	Not Classified	1
Closed Sites		19
	Class 1 (High Priority)	-
	Class 2 (Medium Priority)	6
	Class 3 (Low Priority)	4
	Not a Priority for Action	2
	Insufficient Information	-
	Not Classified	3
Suspected Sites		0
	Class 1 (High Priority)	-
	Class 2 (Medium Priority)	-
	Class 3 (Low Priority)	-
	Not a Priority for Action	-
	Insufficient Information	-
	Not Classified	-
Grand Total		24

Environment and Climate Change Canada (ECCC)

Site Status and Class		Count
Active Sites		5
	Class 1 (High Priority)	1
	Class 2 (Medium Priority)	-
	Class 3 (Low Priority)	2
	Not a Priority for Action	2
	Insufficient Information	-
	Not Classified	-
Closed Sites		17
	Class 1 (High Priority)	10
	Class 2 (Medium Priority)	2
	Class 3 (Low Priority)	-
	Not a Priority for Action	-
	Insufficient Information	-
	Not Classified	5
Suspected Sites		0
	Class 1 (High Priority)	-
	Class 2 (Medium Priority)	-
	Class 3 (Low Priority)	-
	Not a Priority for Action	-
	Insufficient Information	-
	Not Classified	-
Grand Total		22

Agriculture and Agri-Food Canada (AAFC)

Site Status and Class		Count
Active Sites		0
	Class 1 (High Priority)	-
	Class 2 (Medium Priority)	-
	Class 3 (Low Priority)	-
	Not a Priority for Action	-
	Insufficient Information	-
	Not Classified	-
Closed Sites		86
	Class 1 (High Priority)	-
	Class 2 (Medium Priority)	16
	Class 3 (Low Priority)	6
	Not a Priority for Action	12
	Insufficient Information	-
	Not Classified	52
Suspected Sites		0
	Class 1 (High Priority)	-
	Class 2 (Medium Priority)	-
	Class 3 (Low Priority)	-
	Not a Priority for Action	-
	Insufficient Information	-
	Not Classified	-
Grand Total		290

Canadian Border Services Agency (CBSA)

Site Status and Class		Count
Active Sites		0
	Class 1 (High Priority)	-
	Class 2 (Medium Priority)	-
	Class 3 (Low Priority)	-
	Not a Priority for Action	-
	Insufficient Information	-
	Not Classified	-
Closed Sites		1
	Class 1 (High Priority)	-
	Class 2 (Medium Priority)	-
	Class 3 (Low Priority)	-
	Not a Priority for Action	1
	Insufficient Information	-
	Not Classified	-
Suspected Sites		0
	Class 1 (High Priority)	-
	Class 2 (Medium Priority)	-
	Class 3 (Low Priority)	-
	Not a Priority for Action	-
	Insufficient Information	-
	Not Classified	-
Grand Total		1

Health Canada (HC)

Site Status and Class		Count
Active Sites		0
	Class 1 (High Priority)	-
	Class 2 (Medium Priority)	-
	Class 3 (Low Priority)	-
	Not a Priority for Action	-
	Insufficient Information	-
	Not Classified	-
Closed Sites		14
	Class 1 (High Priority)	1
	Class 2 (Medium Priority)	2
	Class 3 (Low Priority)	-
	Not a Priority for Action	9
	Insufficient Information	-
	Not Classified	2
Suspected Sites		0
	Class 1 (High Priority)	-
	Class 2 (Medium Priority)	-
	Class 3 (Low Priority)	-
	Not a Priority for Action	-
	Insufficient Information	-
	Not Classified	-
Grand Total		14

National Research Council of Canada (NRC)

Site Status and Class		Count
Active Sites		0
	Class 1 (High Priority)	-
	Class 2 (Medium Priority)	-
	Class 3 (Low Priority)	-
	Not a Priority for Action	-
	Insufficient Information	-
	Not Classified	-
Closed Sites		1
	Class 1 (High Priority)	-
	Class 2 (Medium Priority)	-
	Class 3 (Low Priority)	-
	Not a Priority for Action	-
	Insufficient Information	-
	Not Classified	1
Suspected Sites		0
	Class 1 (High Priority)	-
	Class 2 (Medium Priority)	-
	Class 3 (Low Priority)	-
	Not a Priority for Action	-
	Insufficient Information	-
	Not Classified	-
Grand Total		1

Natural Resource Canada (NRCan)

Site Status and Class		Count
Active Sites		0
	Class 1 (High Priority)	-
	Class 2 (Medium Priority)	-
	Class 3 (Low Priority)	-
	Not a Priority for Action	-
	Insufficient Information	-
	Not Classified	-
Closed Sites		1
	Class 1 (High Priority)	-
	Class 2 (Medium Priority)	-
	Class 3 (Low Priority)	-
	Not a Priority for Action	-
	Insufficient Information	-
	Not Classified	1
Suspected Sites		0
	Class 1 (High Priority)	-
	Class 2 (Medium Priority)	-
	Class 3 (Low Priority)	-
	Not a Priority for Action	-
	Insufficient Information	-
	Not Classified	-
Grand Total		1

Public Services and Procurement Canada (PSPC)

Site Status and Class		Count
Active Sites		1
	Class 1 (High Priority)	-
	Class 2 (Medium Priority)	1
	Class 3 (Low Priority)	-
	Not a Priority for Action	-
	Insufficient Information	-
	Not Classified	-
Closed Sites		3
	Class 1 (High Priority)	1
	Class 2 (Medium Priority)	-
	Class 3 (Low Priority)	1
	Not a Priority for Action	1
	Insufficient Information	-
	Not Classified	-
Suspected Sites		0
	Class 1 (High Priority)	-
	Class 2 (Medium Priority)	-
	Class 3 (Low Priority)	-
	Not a Priority for Action	-
	Insufficient Information	-
	Not Classified	-
Grand Total		4

VIA Rail Canada (VIA)

Site Status and Class		Count
Active Sites		0
	Class 1 (High Priority)	-
	Class 2 (Medium Priority)	-
	Class 3 (Low Priority)	-
	Not a Priority for Action	-
	Insufficient Information	-
	Not Classified	-
Closed Sites		4
	Class 1 (High Priority)	-
	Class 2 (Medium Priority)	-
	Class 3 (Low Priority)	-
	Not a Priority for Action	-
	Insufficient Information	-
	Not Classified	4
Suspected Sites		0
	Class 1 (High Priority)	-
	Class 2 (Medium Priority)	-
	Class 3 (Low Priority)	-
	Not a Priority for Action	-
	Insufficient Information	-
	Not Classified	-
Grand Total		4