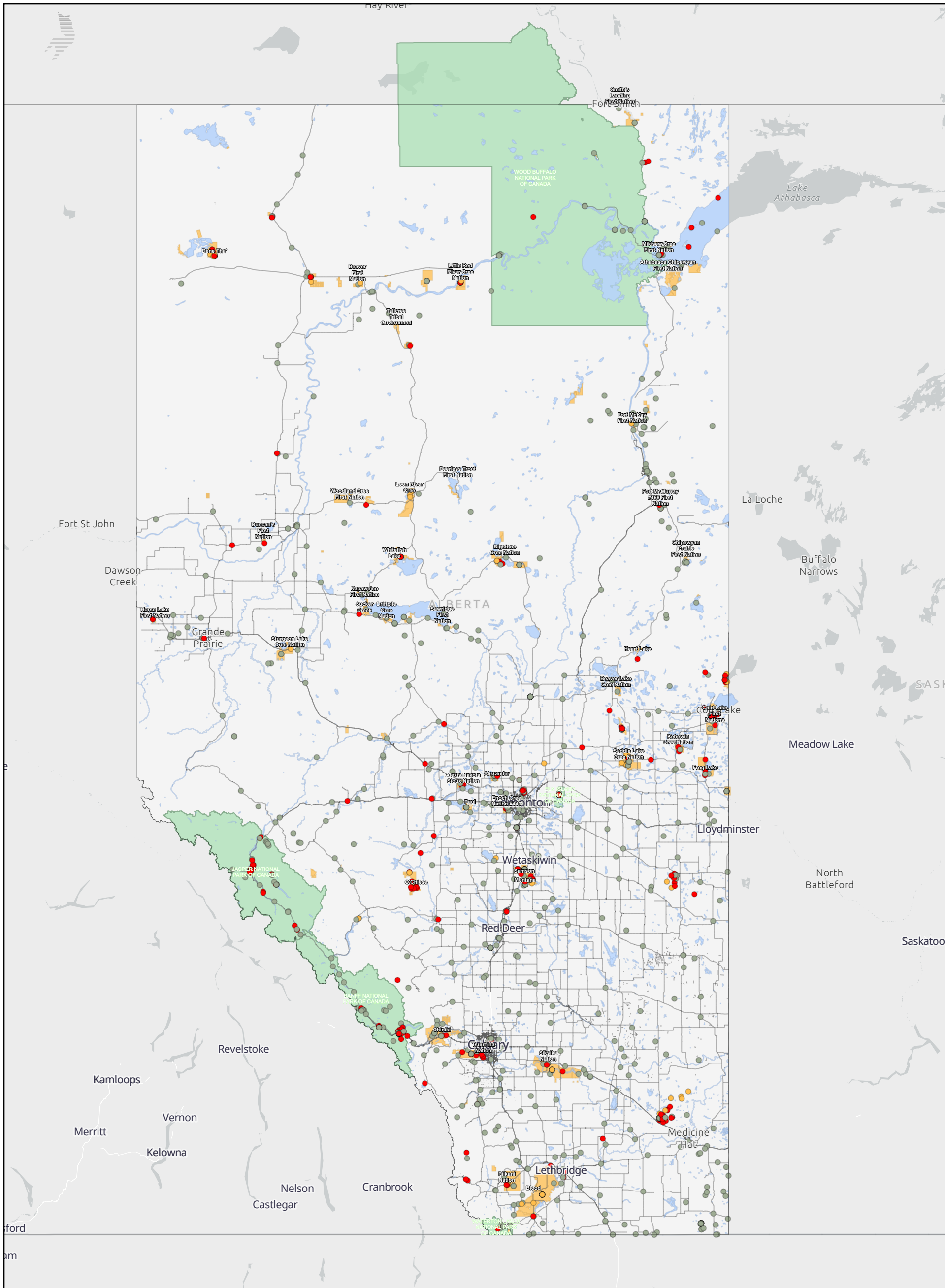


Federal Contaminated Sites in Alberta



12/30/2022

Federal Contaminated Sites Inventory (Treasury Board Secretariat, December 2022)

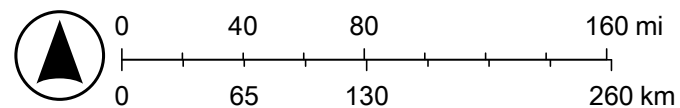
- Active
- Suspected
- Closed

— Road Network (Statistics Canada, April 2022)

■ National Parks of Canada (Natural Resources Canada, July 2022)

■ Aboriginal Lands of Canada [Indian Reserves, Land Claim Settlement Lands and Indian Lands] (Natural Resources Canada, 2017)

1:7,000,001



Map data © OpenStreetMap contributors, Microsoft, Facebook, Inc. and its affiliates, Esri Community Maps contributors, Map layer by Esri
Sources: Esri, HERE, Garmin, FAO, NOAA, USGS, ©



Map disclaimer:

Please note that the maps are distributed for informational and representational purposes only. Therefore, the maps have no legal effect and should not be used to define official boundaries. His Majesty the King in Right of Canada, as represented by the Minister of the Environment does not warrant or guarantee the accuracy or completeness of the information contained in the maps. The maps are not to be relied upon for any purpose or activity, including but not limited to assessing consultation obligations. His Majesty the King in Right of Canada (ECCC) does not assume any legal liability or responsibility for any damage or loss incurred as a result of the use of the maps.

The geospatial information regarding Indigenous Peoples, Indigenous Lands, Treaties, agreements, and claims displayed on these maps was selected using the [Aboriginal and Treaty Rights Information System \(ATRIS\)](#), a Web-based information system intended to map out the location of Indigenous communities hosted by CIRNAC or on the [Open Data catalog](#) of the Government of Canada. We cannot guarantee that the information is up to date as the datasets have been published by departments outside of the FCSAP Secretariat. Please note that some information such as potential Aboriginal or treaty rights may not have been included because the necessary Indigenous and First Nations cartographic resources were not publicly available on the Government of Canada open databases at the time the maps were produced. If you have any questions about the map production, you can contact the Secretariat's email address (fcsap.pascf@ec.gc.ca).

For more geospatial information on federal contaminated sites, please consult the Treasury Board of Canada Secretariat's map browser: [Directory of Federal Real Property | Treasury Board of Canada Secretariat \(tbs-sct.gc.ca\)](#)

ALBERTA

FEDERAL CONTAMINATED SITES SUMMARY TABLES

Site Status and Class		Count
Active Sites		228
	Class 1 (High Priority)	26
	Class 2 (Medium Priority)	85
	Class 3 (Low Priority)	48
	Not a Priority for Action	33
	Insufficient Information	4
	Not Classified	32
Closed Sites		765
	Class 1 (High Priority)	117
	Class 2 (Medium Priority)	71
	Class 3 (Low Priority)	52
	Not a Priority for Action	103
	Insufficient Information	20
	Not Classified	402
Suspected Sites		64
	Class 1 (High Priority)	-
	Class 2 (Medium Priority)	-
	Class 3 (Low Priority)	-
	Not a Priority for Action	-
	Insufficient Information	-
	Not Classified	64
Grand Total		1057

Indigenous Services Canada (ISC)

Site Status and Class		Count
Active Sites		79
	Class 1 (High Priority)	9
	Class 2 (Medium Priority)	30
	Class 3 (Low Priority)	20
	Not a Priority for Action	9
	Insufficient Information	1
	Not Classified	10
Closed Sites		119
	Class 1 (High Priority)	9
	Class 2 (Medium Priority)	27
	Class 3 (Low Priority)	16
	Not a Priority for Action	6
	Insufficient Information	4
	Not Classified	57
Suspected Sites		40
	Class 1 (High Priority)	-
	Class 2 (Medium Priority)	-
	Class 3 (Low Priority)	-
	Not a Priority for Action	-
	Insufficient Information	-
	Not Classified	40
Grand Total		238

Department of National Defence (DND)

Site Status and Class		Count
Active Sites		74
	Class 1 (High Priority)	6
	Class 2 (Medium Priority)	25
	Class 3 (Low Priority)	15
	Not a Priority for Action	19
	Insufficient Information	2
	Not Classified	7
Closed Sites		53
	Class 1 (High Priority)	6
	Class 2 (Medium Priority)	3
	Class 3 (Low Priority)	11
	Not a Priority for Action	21
	Insufficient Information	2
	Not Classified	10
Suspected Sites		18
	Class 1 (High Priority)	-
	Class 2 (Medium Priority)	-
	Class 3 (Low Priority)	-
	Not a Priority for Action	-
	Insufficient Information	-
	Not Classified	18
Grand Total		145

Parks Canada Agency (PCA)

Site Status and Class		Count
Active Sites		42
	Class 1 (High Priority)	8
	Class 2 (Medium Priority)	28
	Class 3 (Low Priority)	3
	Not a Priority for Action	1
	Insufficient Information	1
	Not Classified	1
Closed Sites		80
	Class 1 (High Priority)	10
	Class 2 (Medium Priority)	15
	Class 3 (Low Priority)	8
	Not a Priority for Action	32
	Insufficient Information	2
	Not Classified	13
Suspected Sites		1
	Class 1 (High Priority)	-
	Class 2 (Medium Priority)	-
	Class 3 (Low Priority)	-
	Not a Priority for Action	-
	Insufficient Information	-
	Not Classified	1
Grand Total		123

Royal Canadian Mounted Police (RCMP)

Site Status and Class		Count
Active Sites		13
	Class 1 (High Priority)	-
	Class 2 (Medium Priority)	-
	Class 3 (Low Priority)	-
	Not a Priority for Action	1
	Insufficient Information	-
	Not Classified	12
Closed Sites		65
	Class 1 (High Priority)	-
	Class 2 (Medium Priority)	-
	Class 3 (Low Priority)	-
	Not a Priority for Action	-
	Insufficient Information	1
	Not Classified	64
Suspected Sites		3
	Class 1 (High Priority)	-
	Class 2 (Medium Priority)	-
	Class 3 (Low Priority)	-
	Not a Priority for Action	-
	Insufficient Information	-
	Not Classified	3
Grand Total		81

Agriculture and Agri-Food Canada (AAFC)

Site Status and Class		Count
Active Sites		6
	Class 1 (High Priority)	-
	Class 2 (Medium Priority)	-
	Class 3 (Low Priority)	4
	Not a Priority for Action	2
	Insufficient Information	-
	Not Classified	-
Closed Sites		32
	Class 1 (High Priority)	-
	Class 2 (Medium Priority)	5
	Class 3 (Low Priority)	4
	Not a Priority for Action	6
	Insufficient Information	-
	Not Classified	17
Suspected Sites		0
	Class 1 (High Priority)	-
	Class 2 (Medium Priority)	-
	Class 3 (Low Priority)	-
	Not a Priority for Action	-
	Insufficient Information	-
	Not Classified	-
Grand Total		38

Transport Canada (TC)

Site Status and Class		Count
Active Sites		5
	Class 1 (High Priority)	2
	Class 2 (Medium Priority)	1
	Class 3 (Low Priority)	-
	Not a Priority for Action	-
	Insufficient Information	-
	Not Classified	2
Closed Sites		35
	Class 1 (High Priority)	1
	Class 2 (Medium Priority)	5
	Class 3 (Low Priority)	2
	Not a Priority for Action	6
	Insufficient Information	9
	Not Classified	12
Suspected Sites		0
	Class 1 (High Priority)	-
	Class 2 (Medium Priority)	-
	Class 3 (Low Priority)	-
	Not a Priority for Action	-
	Insufficient Information	-
	Not Classified	-
Grand Total		40

Fisheries and Oceans Canada (DFO)

Site Status and Class		Count
Active Sites		4
	Class 1 (High Priority)	-
	Class 2 (Medium Priority)	1
	Class 3 (Low Priority)	3
	Not a Priority for Action	-
	Insufficient Information	-
	Not Classified	-
Closed Sites		45
	Class 1 (High Priority)	-
	Class 2 (Medium Priority)	1
	Class 3 (Low Priority)	3
	Not a Priority for Action	17
	Insufficient Information	1
	Not Classified	23
Suspected Sites		2
	Class 1 (High Priority)	-
	Class 2 (Medium Priority)	-
	Class 3 (Low Priority)	-
	Not a Priority for Action	-
	Insufficient Information	-
	Not Classified	2
Grand Total		51

Environment and Climate Change Canada (ECCC)

Site Status and Class		Count
Active Sites		4
	Class 1 (High Priority)	1
	Class 2 (Medium Priority)	-
	Class 3 (Low Priority)	2
	Not a Priority for Action	1
	Insufficient Information	-
	Not Classified	-
Closed Sites		317
	Class 1 (High Priority)	91
	Class 2 (Medium Priority)	8
	Class 3 (Low Priority)	6
	Not a Priority for Action	9
	Insufficient Information	-
	Not Classified	203
Suspected Sites		0
	Class 1 (High Priority)	-
	Class 2 (Medium Priority)	-
	Class 3 (Low Priority)	-
	Not a Priority for Action	-
	Insufficient Information	-
	Not Classified	-
Grand Total		321

Atomic Energy of Canada Limited (AECL)

Site Status and Class		Count
Active Sites		1
	Class 1 (High Priority)	-
	Class 2 (Medium Priority)	-
	Class 3 (Low Priority)	1
	Not a Priority for Action	-
	Insufficient Information	-
	Not Classified	-
Closed Sites		1
	Class 1 (High Priority)	-
	Class 2 (Medium Priority)	-
	Class 3 (Low Priority)	-
	Not a Priority for Action	1
	Insufficient Information	-
	Not Classified	-
Suspected Sites		0
	Class 1 (High Priority)	-
	Class 2 (Medium Priority)	-
	Class 3 (Low Priority)	-
	Not a Priority for Action	-
	Insufficient Information	-
	Not Classified	-
Grand Total		2

Canadian Border Services Agency (CBSA)

Site Status and Class		Count
Active Sites		0
	Class 1 (High Priority)	-
	Class 2 (Medium Priority)	-
	Class 3 (Low Priority)	-
	Not a Priority for Action	-
	Insufficient Information	-
	Not Classified	-
Closed Sites		6
	Class 1 (High Priority)	-
	Class 2 (Medium Priority)	5
	Class 3 (Low Priority)	1
	Not a Priority for Action	-
	Insufficient Information	-
	Not Classified	-
Suspected Sites		0
	Class 1 (High Priority)	-
	Class 2 (Medium Priority)	-
	Class 3 (Low Priority)	-
	Not a Priority for Action	-
	Insufficient Information	-
	Not Classified	-
Grand Total		6

Canadian Food Inspection Agency (CFIA)

Site Status and Class		Count
Active Sites		0
	Class 1 (High Priority)	-
	Class 2 (Medium Priority)	-
	Class 3 (Low Priority)	-
	Not a Priority for Action	-
	Insufficient Information	-
	Not Classified	-
Closed Sites		2
	Class 1 (High Priority)	-
	Class 2 (Medium Priority)	-
	Class 3 (Low Priority)	-
	Not a Priority for Action	2
	Insufficient Information	-
	Not Classified	-
Suspected Sites		0
	Class 1 (High Priority)	-
	Class 2 (Medium Priority)	-
	Class 3 (Low Priority)	-
	Not a Priority for Action	-
	Insufficient Information	-
	Not Classified	-
Grand Total		2

Health Canada (HC)

Site Status and Class		Count
Active Sites		0
	Class 1 (High Priority)	-
	Class 2 (Medium Priority)	-
	Class 3 (Low Priority)	-
	Not a Priority for Action	-
	Insufficient Information	-
	Not Classified	-
Closed Sites		2
	Class 1 (High Priority)	-
	Class 2 (Medium Priority)	-
	Class 3 (Low Priority)	-
	Not a Priority for Action	2
	Insufficient Information	-
	Not Classified	-
Suspected Sites		0
	Class 1 (High Priority)	-
	Class 2 (Medium Priority)	-
	Class 3 (Low Priority)	-
	Not a Priority for Action	-
	Insufficient Information	-
	Not Classified	-
Grand Total		2

Natural Resources Canada (NRCan)

Site Status and Class		Count
Active Sites		0
	Class 1 (High Priority)	-
	Class 2 (Medium Priority)	-
	Class 3 (Low Priority)	-
	Not a Priority for Action	-
	Insufficient Information	-
	Not Classified	-
Closed Sites		5
	Class 1 (High Priority)	-
	Class 2 (Medium Priority)	-
	Class 3 (Low Priority)	1
	Not a Priority for Action	1
	Insufficient Information	-
	Not Classified	3
Suspected Sites		0
	Class 1 (High Priority)	-
	Class 2 (Medium Priority)	-
	Class 3 (Low Priority)	-
	Not a Priority for Action	-
	Insufficient Information	-
	Not Classified	-
Grand Total		5

Public Services and Procurement Canada (PSPC)

Site Status and Class		Count
Active Sites		0
	Class 1 (High Priority)	-
	Class 2 (Medium Priority)	-
	Class 3 (Low Priority)	-
	Not a Priority for Action	-
	Insufficient Information	-
	Not Classified	-
Closed Sites		2
	Class 1 (High Priority)	-
	Class 2 (Medium Priority)	2
	Class 3 (Low Priority)	-
	Not a Priority for Action	-
	Insufficient Information	-
	Not Classified	-
Suspected Sites		0
	Class 1 (High Priority)	-
	Class 2 (Medium Priority)	-
	Class 3 (Low Priority)	-
	Not a Priority for Action	-
	Insufficient Information	-
	Not Classified	-
Grand Total		2

VIA Rail Canada (VIA)

Site Status and Class		Count
Active Sites		0
	Class 1 (High Priority)	-
	Class 2 (Medium Priority)	-
	Class 3 (Low Priority)	-
	Not a Priority for Action	-
	Insufficient Information	-
	Not Classified	-
Closed Sites		1
	Class 1 (High Priority)	-
	Class 2 (Medium Priority)	-
	Class 3 (Low Priority)	-
	Not a Priority for Action	-
	Insufficient Information	1
	Not Classified	-
Suspected Sites		0
	Class 1 (High Priority)	-
	Class 2 (Medium Priority)	-
	Class 3 (Low Priority)	-
	Not a Priority for Action	-
	Insufficient Information	-
	Not Classified	-
Grand Total		1