

Distribution of First Nations in Manitoba

Treaty 1, 1871

Band Label	Band Name	Associated Reserves
6	Brokenhead Ojibway Nation Band	Brokenhead 4
11	Dakota Plains First Nation Band	Dakota Plains 6A
12	Dakota Tipi Band	Dakota Tipi 1
31	Long Plain First Nation Band	Long Plain 6
45	Peguis Band	Peguis 1D, 1E, 1F, 1G, 1H, 1I; and St. Peters Fishing Station 1A
50	Roseau River Anishinabe First Nation Government	Roseau Rapids 2A; Roseau River 2 and 2B
51	Sagkeeng/Fort Alexander First Nation Band	Fort Alexander 3
61	Swan Lake First Nation Band	Indian Gardens 8; Swan Lake 7, 7A and 8A

Treaty 2, 1871

Band Label	Band Name	Associated Reserves
4	Birdtail Sioux First Nation Band	Birdtail Creek 57 and Birdtail Haylands 57A
14	Ebb And Flow Band	Ebb and Flow 52
16	Fisher River Band	Fisher River 44 and 44A
18	Gamblers Band	Gambler 63
24	Keeseekoowenin Band	Bottle Lake 61B; Clear Lake 61A; and Keeseekoowenin 61
25	Kinonjeoshtegon Band	Jackhead 43 and 43A
26	Lake Manitoba Band	Dog Creek 46
27	Lake St. Martin Band	The Narrows 49A
30	Little Saskatchewan Band	Little Saskatchewan 48B
40	O-Chi-Chak-Ko-Sipi First Nation Band	Crane River 51
42	Oak Lake First Nation Band	Canupawakpa Dakota; Fishing Station 62A; and Oak Lake 59A
45	Peguis Band	Peguis 1B and 1C
46	Pine Creek Band	Pine Creek 66A
49	Rolling River Band	Rolling River 67, 67A and 67B
52	Sandy Bay First Nation Band	Sandy Bay 5
57	Sioux Valley First Nation Band	Sioux Valley Dakota Nation
62	Tootinaowaziibeeng Treaty Reserve Band	Valley River 63A
65	Waywayseecappo First Nation Treaty Four 1874 Band	Waywayseecappo First Nation

Treaty 3, 1873

Band Label	Band Name	Associated Reserves
3	Big Island First Nation	Shoal Lake 31J
7	Buffalo Point First Nation Band	Buffalo Point 1, 2, 3, 36; and Reed River 36A
23	Iskutewisakaygun #39 Independent First Nation	Shoal Lake 34B2, 39 and 39A
38	Northwest Angle #37 First Nation	Northwest Angle 34C, 37B and 37; Shoal Lake 34B1 and 37A
56	Shoal Lake #40 First Nation	Shoal Lake 40

Treaty 4, 1874

Band Label	Band Name	Associated Reserves
19	Garden Hill First Nation Band	Carry the Kettle Nakoda 76-28; Kawacatoose First Nation 88; Kuskowekwan 85-54 and 85-55; Ochapowace 71-28, 71-30, 71-31, 71-32, 71-33, 71-94 and 71-129; Okanese 82L; Pelican Rapids Access Road Phase 1; Sakimay 74-15 and 74-5; and Yellow Quill 90-18
53	Sapotaweyak Cree Nation Band	Sapotaweyak Creen Nation - Spruce Island; Shoal River 65A, 65B and 65F
66	Wuskwi Sipihk Band	Swan Lake 65C; Wuskwi Sipihk 1, 2, 3A, 3B, 3C, 3D, 3E, 3F, 4, 5, 6 and 7

Treaty 6, 1876

Band Label	Band Name	Associated Reserves
19	Garden Hill First Nation Band	English River First Nation Barkwell Bay 192I; Kistapin-Nihk 231; Kistapinan 211; Mckay 209; Moosomin 112k; Saulteaux First Nations 159 FF, 159EE And 159II; Sweetgrass 113-D33

Treaty 5, 1875

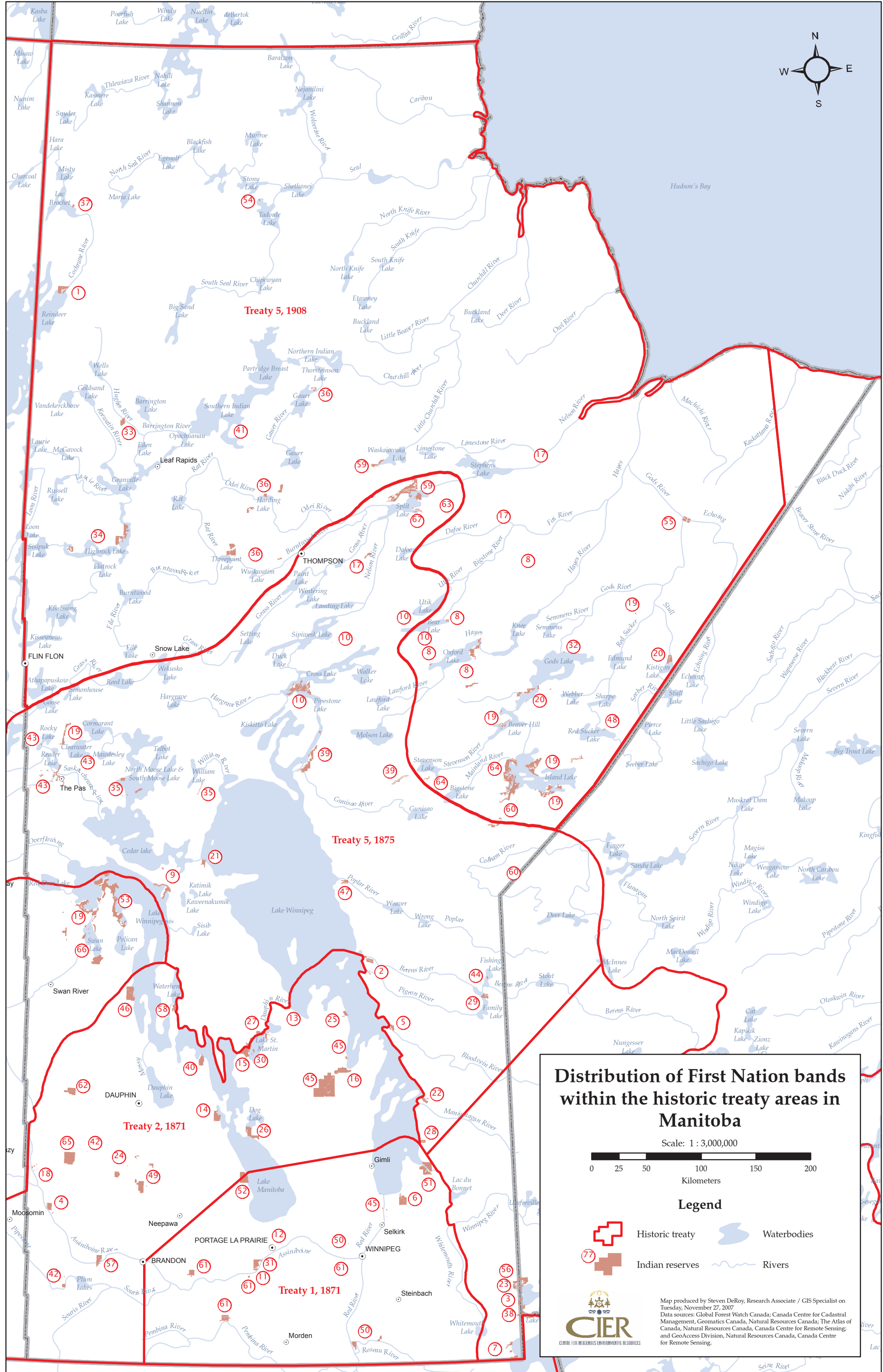
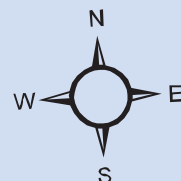
Band Label	Band Name	Associated Reserves
2	Berens River Band	Berens River 13 and Pigeon River 13A
5	Bloodvein Band	Bloodvein 12
9	Chemawawin Cree Nation Band	Chemawawin 1, 2 and 3
10	Cross Lake Band	Cross Lake 19, 19A, 19B, 19C, 19D, 19E, 19X03, 19X05 and 19X06; and Whiskey Jack
13	Dauphin River Band	Dauphin River 48A
15	Fairford Band	Fairford 50
17	Fox Lake Band	Fox Lake West 3
19	Garden Hill First Nation Band	Root Lake Beach Ridge Site
21	Grand Rapids First Nation Band	Grand Rapids 33
22	Hollow Water First Nation Band	Hollow Water 10
27	Lake St. Martin Band	The Narrows 49
28	Little Black River Band	Little Grand Rapids 14
29	Little Grand Rapids Band	Black River 9
30	Little Saskatchewan Band	Little Saskatchewan 48
35	Mosakahiken Cree Nation Band	Moose Lake 31A, 31C, 31D, 31G and 31J
39	Norway House Band	Norway House 17, 17A and 17B; and Ponask Lake
43	Opaskwayak Cree Nation Band	Opaskwayak Cree Nation 21 (Stony Point), 21A, 21B, 21C, 21D, 21E, 21F, 21G, 21I, 21J, 21K, 21L, 21N, 21P; Root Lake 231; and Salt Channel 21D
44	Pauingassi First Nation	Pauingassi
47	Poplar River First Nation Band	Poplar River 16
58	Skownan First Nation Band	Waterhen 45
59	Split Lake Cree First Nation Band	Split Lake 171A and 171B
60	St. Theresa Point Band	Mukwa Narrows
63	War Lake Band	Mooseocoot
67	York Factory First Nation Band	York Landing

Treaty 5, 1908

Band Label	Band Name	Associated Reserves
1	Barren Lands Band	Brochet 197
8	Bunibonibee Cree Nation Band	Oxford House 24, 24A, 24B, 24C, 24D
10	Cross Lake Band	Cross Lake 19X01 and 19X02
17	Fox Lake Band	Fox Lake 1; and Fox Lake East 2
19	Garden Hill First Nation Band	Amik Wachink Sakahikan; Garden Hill First Nation; Pe-Ta-Waygamak; Red Cross Lake North; Seeseep Sakahikan; Weshia Kijay Wasagamach
20	God's Lake Narrows Band	Andrew Bay; Chataway Lake/Knife Lake; God's Lake 23; North Prominent Ridge; Vermilyea Lake
32	Manto Sipi Cree Nation Band	God's River 86A
33	Marcel Colomb Band	Black Sturgeon
34	Mathias Colomb Band	Highrock 199; Pukatawagan 198
36	Nisichawayasihk Cree Nation Band	Kapawasihk; Monahawuhkan; Nelson House 170, 170A, 170B, 170C; Opekunosakakanihk; Wapasihk; and Wuskwi Sipi
37	Northlands Band	Lac Brochet 197A
41	O-Pipon-Na-Piwin Cree Nation Band	O-Pipon-Na-Piwin Cree Nation 1
48	Red Sucker Lake Band	Red Sucker Lake 1976
54	Sayisi Dene First Nation Band	Churchill 1
55	Shamattawa First Nation Band	Shamattawa 1
59	Split Lake Cree First Nation Band	Split Lake 171
60	St. Theresa Point Band	Cantin Lake and St. Theresa Point
64	Wasagamack Band	Feather Rapids; Naytawunkank; and Wasagamack

Treaty 10, 1906

Band Label	Band Name	Associated Reserves
19	Garden Hill First Nation Band	English River First Nation Flatstone Lake 192L; English River First Nation Haultain Lake 192K; and Roadside 165F



Distribution of First Nation bands within the historic treaty areas in Manitoba

Scale: 1 : 3,000,000

Legend

- Historic treaty
- Waterbodies
- Indian reserves
- Rivers

Map produced by Steven DeRoy, Research Associate / GIS Specialist on Tuesday, November 27, 2007
Data sources: Global Forest Watch Canada; Canada Centre for Cadastral Management, Geomatics Canada, Natural Resources Canada; The Atlas of Canada, Natural Resources Canada, Canada Centre for Remote Sensing and GeoAccess Division, Natural Resources Canada, Canada Centre for Remote Sensing.